

# STORM RESPONSE



**RESCO**  
SUPPLYING THE COOPERATIVE ADVANTAGE



# TABLE OF CONTENTS

## Fuses ..... 4 - 6

Type QA, 200, X and T Fit-All Fuse Links, and Type 200, X and T Trip-O-Link Fuse Links.

## Connectors..... 7 - 13

Compression Connectors, Overhead Connectors, Mechanical Connectors, Service Entrance Compression Splices, Distribution Compression Splices, Automatic Splices and Clamps.

## Arresters .....14

For Distribution Voltages.

## Cutouts and Switches ..... 15 - 16

Polymer and Porcelain Cutouts and Overhead Switches.

## Brackets ..... 17 - 19

Banded- and Wing-Type Transformer Mounting, Single-Phase Vertical Standoff, Cutout/Arrester, and Terminator and Arrester Brackets.

## Pole Line Hardware ..... 20 - 35

Guy Hook and Eye Pole Attachments, Bolts, Pole Top Brackets, Wedges, Clamps, Anchor Shackles, Clevises, Guy Guard, Eye-nuts, Locknuts, Pins, Screws, Staples, Wireholders and Washers.





**Formed Wire/Cable .....36 - 43**

Dead-ends, Armor Rods, Ties, Vibration Damper, Overhead Conductor, Ground Wire and ASCR Cable.

**Crossarms/Crossarm Braces .....44 - 45**

Fiberglass and Wood Crossarms, and Wood Braces.

**Insulators .....46 - 48**

Porcelain Post-Type, Pin-Type, Spool and Guy Strain, Polymer Molded, Fiberglass Guy Strain and Dead-End Insulators.

**Guy Strand .....49**

Galvanized Steel and Aluminum Guy Strand.

**Transformers .....50 - 51**

Pole Mount Transformers.

**Anchoring .....52 - 55**

Anchor Rod Clamps, Bust Expanding Anchors, Pole Keys, Anchor Rods and Eyenuts, and Multi-Helix Anchors.

**Tools .....56 - 59**

Grips, Chain Hoists, Pliers, Sockets, Screwdrivers, Rulers, Wrenches, Knives, Cable Cutters, Hand Tools and Flashlights.

# FUSES

## Type QA Fit-All Fuse Link

Kearney™ Type QA fuse links are classified as “medium” speed fuse links with a nominal speed ratio of 10. Type QA fuse links will carry 100% of the rated current continuously without damage and provide good coordination possibilities with relays and reclosers.

## Cooper Power Systems

by **F·T·N**



MFR MODEL #	CURRENT RATING	RESCO PART #	PACK. QTY.
6414-2T	2 A	77006414KEARNEY	25
6415-2T	3 A	77006415KEARNEY	25
6416-2T	5 A	77006416KEARNEY	25
6417-2T	7 A	77006417KEARNEY	25
6419-2T	15 A	77006419KEARNEY	25
6420-2T	20 A	77006420KEARNEY	25
6421-2T	25 A	77006421KEARNEY	25
6422-2T	30 A	77006422KEARNEY	25
6423-2T	40 A	77006423KEARNEY	25

## Type 200 Fit-All Fuse Link

Kearney Type 200 fuse links are classified as “medium” speed fuses, with a nominal speed ratio of 10. Type 200 fuse links provide more surge withstand capability than Type K links and provide good coordination possibilities with relays and reclosers.

## Cooper Power Systems

by **F·T·N**



MFR MODEL #	CURRENT RATING	RESCO PART #	PACK. QTY.
11003	3 A	77011003KEARNEY	25
11005	5 A	77011005KEARNEY	25
11007	7 A	77011007KEARNEY	25
11010	10 A	77011010KEARNEY	25
11015	15 A	77011015KEARNEY	25
11020	20 A	77011020KEARNEY	25
11025	25 A	77011025KEARNEY	25
11030	30 A	77011030KEARNEY	25
11040	40 A	77011040KEARNEY	25



## Type X Fit-All Fuse Link

Kearney™ Type X fuse links are specially designed for transformer protection. Type X fuse links employ dual element construction, which allows the time-current characteristic to be carefully shaped to closely match the ANSI® C37.42 loading curve for transformers while providing excellent surge withstand to avoid nuisance blowing from lightning and switching surges. The nominal speed ratio of the Type X is 32.

## Cooper Power Systems

by **F.T.N**



MFR MODEL #	CURRENT RATING	RESCO PART #	PACK. QTY.
41100	1 A	77041100KEARNEY	25
41200	2 A	77041200KEARNEY	25
41275	2 ¾ A	77041275KEARNEY	25
41400	4 A	77041400KEARNEY	25

## Type T Fit-All Fuse Link

Kearney™ Type T fuse links meet the ANSI® C37.42 requirements for a “slow” fuse link. The nominal speed ratio of Type T fuse links is 12. Type T fuse links provide slower time-current characteristics than Types K, 200 and QA and coordinate well with relays and reclosers.

## Cooper Power Systems

by **F.T.N**



MFR MODEL #	CURRENT RATING	RESCO PART #	PACK. QTY.
51002	2 A	77051002KEARNEY	25
51003	3 A	77051003KEARNEY	25
51006	6 A	77051006KEARNEY	25
51008	8 A	77051008KEARNEY	25
51010	10 A	77051010KEARNEY	25
51012	12 A	77051012KEARNEY	25
51015	15 A	77051015KEARNEY	25
51020	20 A	77051020KEARNEY	25
51025	25 A	77051025KEARNEY	25
51030	30 A	77051030KEARNEY	25
51040	40 A	77051040KEARNEY	25
51050	50 A	77051050KEARNEY	25
51065	65 A	77051065KEARNEY	25
51080	80 A	77051080KEARNEY	25
51100	100 A	77051100KEARNEY	25

# FUSES | CONNECTORS

## Type 200 Trip-O-Link Fuse Link

Trip-O-Link™ Fuse Links from Cooper Power Systems are Kearney™ Fit-All™ fuse links for cutouts, but without the fuse holder.

**Cooper Power Systems**  
by **FAT-N**



MFR MODEL #	CURRENT RATING	RESCO PART #	PACK. QTY.
12002	2 A	77012002KEARNEY	25
12003	3 A	77012003KEARNEY	25
12005	5 A	77012005KEARNEY	25
12010	10 A	77012010KEARNEY	25
12015	15 A	77012015KEARNEY	25

## Type X Trip-O-Link Fuse Link

Trip-O-Link™ Fuse Links from Cooper Power Systems are Kearney™ Fit-All™ fuse links for cutouts, but without the fuse holder.

**Cooper Power Systems**  
by **FAT-N**



MFR MODEL #	CURRENT RATING	RESCO PART #	PACK. QTY.
42100	1 A	77042100KEARNEY	25
42125	1 ¼ A	77042125KEARNEY	25
42150	1 ½ A	77042150KEARNEY	25
42200	2 A	77042200KEARNEY	25
42250	2 ½ A	77042250KEARNEY	25
42275	2 ¾ A	77042275KEARNEY	25
42350	3 ½ A	77042350KEARNEY	25
42400	4 A	77042400KEARNEY	25

## Type T Trip-O-Link Fuse Link

Trip-O-Link™ Fuse Links from Cooper Power Systems are Kearney™ Fit-All™ fuse links for cutouts, but without the fuse holder.

**Cooper Power Systems**  
by **FAT-N**



MFR MODEL #	CURRENT RATING	RESCO PART #	PACK. QTY.
52002	2 A	77052002KEARNEY	25
52003	3 A	77052003KEARNEY	25
52006	6 A	77052006KEARNEY	25
52010	10 A	77052010KEARNEY	25
52015	15 A	77052015KEARNEY	25



## Aluminum Wide Range H-Tap Compression Connector

- Made of 1350 aluminum alloy to provide high strength and conductivity
- Pre-filled with oxide inhibitor held captive in the rib/connection area
- Enables excellent connector contact without distorting the conductor's shape
- Fold-in tabs provide positive tab interlock as tool closes
- RUS accepted and complies with ANSI C119.4

**Thomas & Betts**  
A Member of the ABB Group  
**Blackburn®**



MFR MODEL #	MAIN CONDUCTOR	TAP CONDUCTOR	DIE	RESCO PART #	PACK. QTY.
WR9	3 - 6 ACSR; 2 - 6 Str; 1 - 4 Sol	8 - 14 Str; 8 - 14 Sol	5/8, BG	17011309BLACKBURN	50
WR139	1/0 - 4 ACSR; 2/0 - 3 Str; 2/0 - 2 Sol	8 - 10 Str; 6 - 10 Sol	0	17011339BLACKBURN	25
WR149	4 - 6 ACSR; 3 - 6 Str; 2 - 6 Sol	4 - 6 ACSR; 3 - 6 Str; 2 - 6 Sol	0	17011349BLACKBURN	25
WR159	2 - 6 ACSR; 1 - 6 Str; 2 - 6 Sol	4 - 6 ACSR; 3 - 6 Str; 2 - 6 Sol	0	17011359BLACKBURN	25
WR179	1/0 - 3 ACSR; 1/0 - 2 Str; 1/0 - 1 Sol	4 - 6 ACSR; 3 - 6 Str; 2 - 6 Sol	0	17011379BLACKBURN	25
WR189	1/0 - 3 ACSR; 2/0 - 2 Str; 3/0 - 1 Sol	2 - 6 ACSR; 1 - 6 Str; 1/0 - 6 Sol	0	17011389BLACKBURN	25
WR199	1/0 - 3 ACSR; 1/0 - 2 Str; 1 Sol	2 - 4 ACSR; 1 - 4 Str; 1 - 2 Sol	0	17011399BLACKBURN	25
WR1010	1/0 - 4 ACSR; 2/0 - 4 Str; 1 - 2 Sol	1/0 - 4 ACSR; 2/0 - 4 Str; 1 - 2 Sol	0	17011410BLACKBURN	25
WR259	1/0 - 2 ACSR; 2/0 - 1 Str	1/0 - 2 ACSR; 2/0 - 2 Str	D, D3	17021359BLACKBURN	25
WR279	2/0 - 1 ACSR; 3/0 - 1/0 Str; 4/0 - 2/0 Sol	2/0 - 1 ACSR; 3/0 - 1/0 Str; 3/0 - 2/0 Sol	D, D3	17021379BLACKBURN	25
WR289	2/0 - 1/0 ACSR; 3/0 - 2/0 Str	2 - 6 ACSR; 1 - 6 Str; 1/0 - 6 Sol	D, D3	17021389BLACKBURN	25
WR379	4/0 - 3/0 ACSR; 4/0 Str	2 - 6 ACSR; 1 - 6 Str; 1/0 - 6 Sol	D, D3	17031379BLACKBURN	25
WR399	4/0 - 3/0 ACSR; 4/0 - 3/0 Str	2/0 - 1 ACSR; 2/0 - 1/0 Str; 3/0 - 2/0 Sol	D	17031399BLACKBURN	25
WR419	4/0 - 3/0 ACSR; 4/0 - 3/0 Str	4/0 - 3/0 ACSR; 4/0 - 3/0 Str	D, D3	17041319BLACKBURN	25

## Copper H-Tap Compression Connector

- Made of pure electrolytic copper to provide high conductivity
- Efficient design requires less crimping force
- Full length tab makes installation easy; installs with standard compression tools and dies
- RUS accepted

**Thomas & Betts**  
A Member of the ABB Group  
**Blackburn®**



MFR MODEL #	MAIN CONDUCTOR	TAP CONDUCTOR	DIE	RESCO PART #	PACK. QTY.
CF1010-1	1/0, 1, 2 Str CU	1/0, 1, 2 Str CU	O	17051320BLACKBURN	100
CF2020-1	2/0, 1/0 Str CU	2/0, 1/0, 1, 2 Str CU		17051319BLACKBURN	100
CF4010-1	4/0, 3/0, 2/0 Str CU	2, 1, 1/0 Str CU	D	17051321BLACKBURN	50
CF22-1	4, 2 Sol CU, Main; 4 Str CU	2, 4 Sol; 4 Str CU		17051322BLACKBURN	100
CF44-1	4, 6 Sol; 6 Str CU	8, 4, 6 Sol; 6 Str CU		17051344BLACKBURN	100
CF102-1	1/0, 1, 2 Str CU	2, 4, 6 Sol; 4 Str CU	O	17051325BLACKBURN	100

# CONNECTORS

## H-Tap Connector Cover

- Thin strips of the “grass skirt” mold around the conductor to provide a reliable enclosure
- Tapered drains in both cover halves prevent accumulation of water
- Made from black polypropylene to resist UV



MFR MODEL #	LENGTH	WIDTH	HEIGHT	RESCO PART #	PACK. QTY.
C2-BB	4.0"	1.05"	1.10"	18053402BLACKBURN	100
C5-BB	3.75"	1.25"	1.60"	18053405BLACKBURN	100
C7	5.0"	1.45"	1.80"	18053407BLACKBURN	100
C9L	7.25"	2.0"	2.75"	18053409BLACKBURN	50

## Overhead Connector

- Connect aluminum and ACSR to copper-alloy equipment clamps; eliminates cold-flow problems of aluminum conductor in copper clamps
- Annealed, tin-plated copper pin; ensures high conductivity and bends easily to aid in cable training
- Oxide inhibitor and metal sealant prevents oxidation and protects pin/body from moisture intrusion
- All pin terminals marked with wire size, installing dies and compression locations for easy identification



MFR MODEL #	CONDUCTOR SIZE	PIN LENGTH	RESCO PART #	PACK. QTY.
X5U40	4/0 Str; 4/0 ACSR	3"	17051196HOMAC	25
U5U4	2 Sol; 3 & 4 Str; 4 ACSR	2"	17051200HOMAC	50
U5U2	1 & 2 Str; 2 ACSR	2"	17051202HOMAC	50
U5U10	1/0 Str; 1/0 ACSR	2.5"	17051203HOMAC	50
X5U10-6	1/0 Str; 1/0 ACSR	6"	17051206HOMAC	25
X5U40-6	4/0 Str; 4/0 ACSR	6"	17051212HOMAC	25

## C-Type Compression Tabs

- Can be held in the dies or jaws of an installation tool, then hooked directly over the line enabling time saving installations
- Manufactured from pure electrical grade copper; provides a highly conductive low resistant reliable connection
- Die references marked on connector for easy installation



MFR MODEL #	GROOVE A CONDUCTOR	GROOVE B CONDUCTOR	LENGTH	RESCO PART #	PACK. QTY.
CC24	2 Sol - 2 Str	8 Sol - 4 St	3/4"	17051349HOMAC	100
CC22	2 Sol - 2 Str	2 Sol - 2 Str	3/4"	17051350HOMAC	100
CC44	6 Sol - 4 Str	4 Sol - 4 Str	5/8"	17051345HOMAC	100
CC46	6 Sol - 4 Str	6 Sol - 6 Str	5/8"	17051348HOMAC	100





## Insulated Service Entrance Compression Splice

- Use for combinations of aluminum-to-aluminum and aluminum-to-copper conductors
- Can be used as a low-cost reducing sleeve
- Concave caps seal out dirt, but are easily pierced when inserting conductor
- Pre-filled with oxide inhibitor
- Color-coded and marked for easy identification
- Standards compliant; meets ANSI C119.4 requirements; RUS listed

**Thomas & Betts**  
A Member of the ABB Group  
**Blackburn®**



MFR MODEL #	END A CONDUCTOR	END B CONDUCTOR	LENGTH	RESCO PART #	PACK. QTY.
ICS64-1	6 ASCR; 6 Str; 4 Sol	6 ASCR; 6 Str; 4 Sol	2.78"	17151364BLACKBURN	100
ICS68-1	4 ASCR; 3 - 4 Str; 2 Sol	4 ASCR; 3 - 4 Str; 2 Sol	2.78"	17151368BLACKBURN	100
ICS72-1	2 ASCR; 1 - 2 Str	4 ASCR; 3 - 4 Str; 2 Sol	2.78"	17151372BLACKBURN	100
ICS73-1	2 ASCR; 1 - 2 Str	2 ASCR; 1 - 2 Str	2.78"	17151373BLACKBURN	100
ICS78-1	1/0 ASCR; 1/0	1/0 Str	2.78"	17151378BLACKBURN	100

## Service Entrance Compression Splice

- Use for combinations of aluminum-to-aluminum and aluminum-to-copper conductors
- Can be used as a low-cost reducing sleeve
- Center stop to ensure proper conductor positioning
- Color-coded and marked for easy identification
- Standards compliant; meets ANSI C119.4 requirements

**Thomas & Betts**  
A Member of the ABB Group  
**Blackburn®**



MFR MODEL #	END A CONDUCTOR	END B CONDUCTOR	LENGTH	RESCO PART #	PACK. QTY.
KL36-1	1/0 ASCR; 1/0 Str; 2/0 Str	1/0 ASCR; 1/0 Str; 2/0 Str Compact	3.5"	17251336BLACKBURN	25
KL47-1	2/0 ASCR; 2/0 Str; 3/0 Str	1/0 ASCR; 2/0 Str; 3/0 Str Compact	3.5"	17251347BLACKBURN	25
KL58-1	3/0 ASCR; 4/0 Str	3/0 ASCR; 3/0 Str; 4/0 Str Compact	3.5"	17251358BLACKBURN	25
KL67-1	4/0 ASCR; 4/0 Str	2/0 ASCR; 2/0 Str; 3/0 Str Compact	3.5"	17251367BLACKBURN	25
KL69-1	4/0 ASCR; 4/0 Str	4/0 ASCR; 4/0 Str	3.5"	17251369BLACKBURN	25

## Splicing Sleeve Connector

Copper and copperweld repair sleeves – compression.

**NICOPRESS®**



MFR MODEL #	CONDUCTOR RANGE	LENGTH	RESCO PART #	PACK. QTY.
R1-6A-P	7A Copperweld	4"	60635206NATIONALTELE	50
R1-8A-P	8 A Copperweld	4"	60635208NATIONALTELE	50
1-6A-P	6 A Copperweld	5.5"	60635228NATIONALTELE	50
1-8A-P	8 A Copperweld	5"	60635231NATIONALTELE	50
1-204-P	#4 Solid Copper	2.75"	60635234NATIONALTELE	100
1-162J	#6 Solid Coper	2.75"	60635240NATIONALTELE	100

STORM RESPONSE

1-866-273-5030

# CONNECTORS

## Ground Rod



- 99.9% pure electrolytic copper coating; will not crack when bent or tear when driven
- Rods have a high carbon steel core and tip that provide superior strength when driving
- UL logo and control number where applicable stamped on each rod for easy inspection after installation
- Manufactured to exceed the requirements of ANSI®/NEMA® GR1
- Copper-bonded ground rods tested according to IEC EN 62561-2 (Note: EN 50164 has been superseded by IEC EN 62561-2)



MFR MODEL #	DESCRIPTION	RESCO PART #	PACK. QTY.
615883	Copper Bonded Ground Rod, 13 MIL 5/8" X 8'	53828500ERICO	5
615803	Copper Bonded Ground Rod, 13 MIL 5/8" X 10'	53828520ERICO	5

## Ground Rod Clamp



MFR MODEL #	CONDUCTOR RANGE	GROUND ROD SIZE	RESCO PART #	PACK. QTY.
CP58	1/0 Str - 10 Sol	5/8" Max	17310010ERICO	50
SP58	2 Str - 10 Sol	1/2" - 5/8"	17310011ERICO	50
CP34	1/0 Str - 10 Sol	1/2" - 3/4"	17310012ERICO	50
HDC58	1/0 Str - 8 Sol	5/8" Max	17311312ERICO	50
HDC58R	8 Sol - 1/0 Str	5/8"	17311337ERICO	50

## Grounding Stud

- For grounding applications conductor-to-conductor, or mounting plate to conductor
- Provided with standard 1/2 - 13 thread studs and flat surfaces for easy one-wrench installation



MFR MODEL #	CONDUCTOR RANGE	DIMENSIONS (L x W x H)	RESCO PART #	PACK. QTY.
GC-207	6 Sol - 1/0 Str	1 1/4" x 3/4" x 1 7/8"	17457590FARGO	25
GC-207LA	8 Sol - 12Str	1 1/4" x 3/4" x 1 7/8"	17457591FARGO	25
GC209	3 Sol - 4/0 Str	1 1/2" x 1 1/8" x 1 3/4"	17457597FARGO	20

## Ground Plate

- More efficient than butt-wrapping poles
- Made of electrolytic sheet copper
- Built-in high-pressure connector for ground lead, or supplied with #6 AWG copper pigtail pre-attached
- Plates are grooved for trapping moisture



MFR MODEL #	CONDUCTOR RANGE	DIAMETER	RESCO PART #	PACK. QTY.
GP100	2 Sol - 8 Str	7 1/2"	46800424BLACKBURN	40



## Split Bolt

- Bolt and nut of high-strength corrosion-resistant bronze alloy
- Copper pressure bar
- Bolt and nut of hex design

**Thomas & Betts**  
A Member of the ABB Group  
**Blackburn®**



MFR MODEL #	CONDUCTOR RANGE	DIMENSIONS (L x W)	RESCO PART #	PACK. QTY.
2H	2 Sol - 6 Sol	1 1/4" x 2 5/32"	17651362BLACKBURN	100
3H	3 Sol - 8 Sol	1 1/6" x 2 3/32"	17651363BLACKBURN	100
4H	4 Sol - 8 Sol	1 1/6" x 2 3/32"	17651365BLACKBURN	100
6H	6 Sol - 8 Sol	3 1/2" x 2 1/32"	17651366BLACKBURN	100
10H	1/0 Str - 4 Sol	1 19/32" x 1 5/16"	17651371BLACKBURN	50
4H3	4 Sol - 8 Sol	1 9/32" x 2 3/32"	17651382BLACKBURN	100
1HPS	1 Str - 8 Sol	1 5/8" x 7/8"	17661396BLACKBURN	100
10HPS	1/0 Str - 6 Sol	1 13/16" x 1 5/16"	17661397BLACKBURN	50

## Automatic Guy Wire Dead-Ends

Automatic dead-ends are designed for use on High Strength, Common, Siemens-Martin, Utilities and Bell System Strand.



**FARGO®**



MFR MODEL #	PRIMARY STRAND APPLICATION	RANGE	DIMENSIONS (L x W)	RESCO PART #	PACK. QTY.
GDE-5102	3/8" Guy Wire	0.360" - 0.405"	11.9" x 1.7"	60616152FARGO	50
GDE-5202	3/8" EHS	0.325" - 0.392"	11.8" x 2.2"	60616153FARGO	25

## Strandvise® Steel

- For dead-end applications with overhead or down guy wire
- Rated to hold a minimum of 90% of RBS of the strand used

**MacLean™**  
POWER SYSTEMS



MFR MODEL #	PRIMARY STRAND APPLICATION	RANGE	DIMENSIONS (L x W)	RESCO PART #	PACK. QTY.
5102	3/8"	0.360" - 0.405"	11.88" x 1.63"	60616152MACLEAN	50

**STORM RESPONSE**

**1-866-273-5030**

# CONNECTORS

## Full-Tension Automatic Splice

- Holds the conductor to its full strength
- Provides conductance equal to or greater than that of the conductor
- Installs easily with live-line tools
- Provides maximum safety by simplifying installation procedures



**FARGO®**



MFR MODEL #	CONDUCTOR RANGE	DIMENSIONS (L x W)	RESCO PART #	PACK. QTY.
GL-111	6 CU Sol; 3 #12 CU	3.4" x 0.5"	60616111FARGO	100
GL-112	4 CU Sol; 8A CU	3.5" x 0.56"	60616120FARGO	100
GL-113	3 Sol; 4 Str; 6A CW	3.5" x 0.56"	60616113FARGO	100
GL-152	3 Sol; 4 Str; 4	4" x 0.56"	60616119FARGO	100
GL-402A	4 AAC; 4AAAC; 4 ACSR	9" x 0.90"	60631394FARGO	50
GL-404A	2 AAC; 2 AAAC; 2 ACSR	12" x 1.0"	60631386FARGO	25
GL-406A	1/0 AAC; 1/0 AAAC; 1/0 ACSR	12" x 1.1"	60631388FARGO	25
GL-408	3/0 AAC; 3/0 AAAC; 3/0 ACSR	20" x 1.6"	60631397FARGO	25
GL409A	4/0 AAC; 4/0 AAAC; 4/0 ACSR	17" x 1.6"	60631393FARGO	25
GL-4042A	2 & 4 AAC; 2 & 4 AAAC; 2 & 4 ACSR	12" x 1"	60631395FARGO	25
GL-5002	3/8 HS 6S; 10m Guy Wire	8.1" x 1.3"	60616150FARGO	50

## Strandlink® Steel

- For splicing applications with overhead or down guy wire
- Rated to hold a minimum of 90% of RBS strand used



MFR MODEL #	PRIMARY STRAND APPLICATION	RANGE	DIMENSIONS (L x W)	RESCO PART #	PACK. QTY.
5002	3/8"	0.360" - 0.405"	8.00" x 1.25"	60616150MACLEAN	50
5043	7/16"	0.392" - 0.455"	10.59" x 1.59"	60616151MACLEAN	25

## Automatic Splice

- Color-coded end pieces provide for visual identification of maximum conductor size
- Pilot cap envelops strands and guides conductor past serrated jaws and into the center of the splice
- Die-cast, precision-made jaws provide optimum contact area for a greater range of conductor sizes
- High-Strength aluminum alloy tubing covers the connection for superior corrosion protection and long-lasting durability



A Member of the ABB Group



MFR MODEL #	CONDUCTOR RANGE	LENGTH	RESCO PART #	PACK. QTY.
ATS2	2 6/1, 7/1 ACSR; 2 AAAC; 2 AAC	13 3/4"	60631399BLACKBURN	25
ATS42	4 6/1, 7/1, 2 6/1, 7/1 ACSR; 4-2 AAAC; 4-2 AAC	13 3/4"	60631400BLACKBURN	25
ATS1020	1/0 6/1, 2/0 7/1 ACSR; 1/0-2/0 AAAC; 1/0-2/0 AAC	16 1/4"	60631401BLACKBURN	25
ATS3040	3/0 6/1, 4/0 6/1 ACSR; 3/0-4/0 AAAC; 3/0-4/0 AAC	23 1/2"	60631402BLACKBURN	10
ATS266336	266 18/1, 266 26/7, 336 18/1 ACSR; 312.8 AAAC; 266-336 AAC	23 1/2"	60631403BLACKBURN	10





## Copper Splice

- Single piece brass jaw which simplifies conductor installation and eliminates jaw disengagement
- Center barrier provides a positive indication of full conductor insertion
- Solid copper conductor rated at 90% of the conductor RBS
- Stranded copper conductor rated at 80% of the conductor RBS
- Copperweld conductor rated at 75% of the conductor RBS



MFR MODEL #	CONDUCTOR RANGE	DIMENSIONS (L x W)	RESCO PART #	PACK. QTY.
41	4 CU Solid ASTM-B258; 6 CU 7 Str; ASTM-B8; 8A Copperweld Str	3.58" x 0.50"	60616120MACLEAN	200
47	3 CU Sol; ASTM-B258; 4 CU 7 Str ASTM-B8; 6A Copperweld Str	3.66" x 0.50"	60616113MACLEAN	200
47LD	3 CU Sol; ASTM-B258; 4 CU 7 Str ASTM-B8; 6A Copperweld Str	L = 6.69"	60616114MACLEAN	50

## ConductRlink ACSR

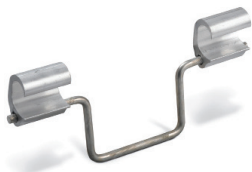
- Rated to hold a minimum of 95% of RBS of the strand used
- ANSI C119.4 full tension Class A connector
- Factory installed inhibitor
- Color coded strand guide for easy identification



MFR MODEL #	CONDUCTOR RANGE	DIMENSIONS (L x W)	RESCO PART #	PACK. QTY.
7652AP	2 & 4 ACSR ASTM - B232; 2 & 4 AAAC ASTM - B399; 2 & 4 AAC ASTM - B231	11.66" x 1.01"	60631395MACLEAN	100
7653	1/0 ACSR ASTM - B232; 1/0 AAAC ASTM - B399; 1/0 & 2/0 AAC ASTM - B231	14.28" x 1.20"	60631388MACLEAN	50
7654AP	1/0 & 2/0 ACSR ASTM - B232; 1/0 & 2/0 AAAC ASTM - B399; 1/0, 2/0 & 3/0 AAC ASTM - B231	15.00" x 1.27"	60631401MACLEAN	

## Stirrup Connector

- Tin plated for lower contact resistance and knurled to resist rotation



MFR MODEL #	CONDUCTOR SIZE	L X W	RESCO PART #	PACK. QTY.
OB 44 ST	6 - 2 ACSR	2 3/4" x 9 1/2"	17081352HOMAC	25
OB 103 ST	6 - 1/0 Str ACSR	2 3/4" x 9 1/2"	17081372HOMAC	25
DB 404 ST	3/0 - 4/0 Str ACSR	2 3/4" x 12"	17083352HOMAC	25

# ARRESTERS | CUTOUTS

## Distribution Arrester: Heavy Duty Class



MFR MODEL #	RATED VOLTAGE (kV)	MCOV 9 (KV)	RESCO PART #	PACKAGE QUANTITY
213708-7324	9	7.65	01520124OHIOBRASS	1
213709-7324	10	8.4	01520125OHIOBRASS	1
213715-7324	18	15.3	01520130OHIOBRASS	1

## Distribution Arrester: Normal Duty Class



MFR MODEL #	RATED VOLTAGE (kV)	MCOV (kV)	RESCO PART #	PACKAGE QUANTITY
217253-7324	3	2.55	01520100OHIOBRASS	1

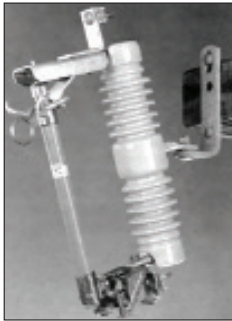
## Distribution Arrester: Riser Pole Class



MFR MODEL #	RATED VOLTAGE (kV)	MCOV (kV)	RESCO PART #	PACKAGE QUANTITY
221603-7314	3	2.55	01530314OHIOBRASS	1
221608-7314	9	7.65	01520140OHIOBRASS	1
221609-7314	10	8.4	01520141OHIOBRASS	1
221615-7314	18	15.3	01520145OHIOBRASS	1



## Porcelain Cutout



MFR MODEL #	SYSTEM VOLTAGE (BIL)	INTERRUPTING RATING	RESCO PART #	PACK. QTY.
C710-112PB	15 kV (110 kV)	10,000 Amps Asym	18312314CHANCE	1
C710-211PB	27 kV (125 kV)	8,000 Amps Asym	18312321CHANCE	1

## Polymer Cutout



MFR MODEL #	SYSTEM VOLTAGE (BIL)	INTERRUPTING RATING	RESCO PART #	PACK. QTY.
CP710-112PB	15 kV (100 kV)	10,000 AIC	18312337CHANCE	1
CP710-133PB	15 kV (110 kV)	10,000 AIC	18312338CHANCE	1
CP710-211PB	27 kV (100 kV)	8,000 AIC	18312340CHANCE	1

## Polymer Cutout/Arrester Combination



MFR MODEL #	SYSTEM VOLTAGE (BIL)	INTERRUPTING RATING	RESCO PART #	PACK. QTY.
CP71EM112PBM	15 kV (110 kV)	10,000 Amps Asym	18341010CHANCE	1

# CUTOUTS | BRACKETS

## Loadbreak Polymer Cutout



**CHANCE**

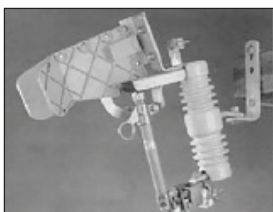


MFR MODEL #	SYSTEM VOLTAGE (BIL)	INTERRUPTING RATING	RESCO PART #	PACK. QTY.
CP730-112PB	15 kV (110 kV)	10,000 AIC	18311313CHANCE	1
CP730-211PB	15/27 kV (125 kV)	8,000 AIC	18312339CHANCE	1

## Loadbreak Porcelain Cutout



**CHANCE**



MFR MODEL #	SYSTEM VOLTAGE (BIL)	INTERRUPTING RATING	RESCO PART #	PACK. QTY.
C730-112PB	15 kV (110 kV)	10,000 AIC	18312330CHANCE	1

## Overhead Switch



**CHANCE**

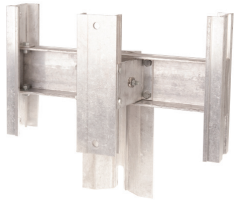


MFR MODEL #	DESCRIPTION	RESCO PART #	PACK. QTY.
M3D-66B	Disconnect Switch 15KV 600A	65220091CHANCE	1
M3C156B	Overhead Switch, M3C 15KV 600A	65610153CHANCE	1
BPRD061	Reg Bypass/Disc Switch 14.4KV	65614000CHANCE	1
BP3R1M	Overhead Switch, 3-Pull Bypass R 17.1KV	65614006CHANCE	1
ALTD06200 R	Line Tension Disc Switch 38KV 600A	65614008CHANCE	1
ATC1343	Para Groove Terminal Switch	65614013CHANCE	2





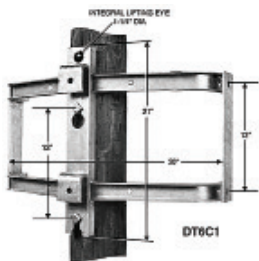
## Transformer Mounting Bracket – Banded Type



MFR MODEL #	kVA RANGE	NEMA LUG SPACING	RESCO PART #	PACK. QTY.
C6M36	3 - 50 kVA	NEMA A (12")	07806805CHANCE	1
C12MW24B	3 - 100 kVA	NEMA A or B (12" or 24")	31002495CHANCE	1
C15M36	3 - 100 kVA	NEMA A or B (12" or 24")	07806606HUBBELL	1
C3MW24A	3 - 50 kVA	NEMA A (12")	07806808CHANCE	1

## Transformer Mounting Bracket – Wing Type

Frame (wing) type transformer mounting brackets offer a simplified, dependable means for mounting multiple pole type transformers on poles in a "cluster" arrangement. Manufactured of high strength steel, stability and balanced pole loading is provided in fulfilling mounting needs for both initial and future transformer requirements.



MFR MODEL #	kVA RANGE	NEMA LUG SPACING	RESCO PART #	PACK. QTY.
DT6C1	3 - 50 kVA	NEMA A (12")	07806600CHANCE	1
DT7C1	3 - 333 kVA	NEMA A or B (12" or 24")	07806601CHANCE	1

## Single-Phase Vertical Pin Standoff Bracket



MFR MODEL #	LENGTH	ROD DIAMETER	RESCO PART #	PACK. QTY.
1SBM18V1	18" (45.7 cm)	1.5"	07815118CHANCE	6

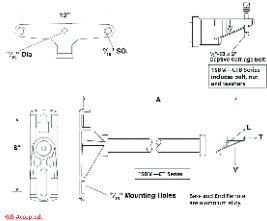
# BRACKETS

## 2-Position Single-Phase Cutout/Arrester Bracket

"T" bracket end fitting.



**CHANCE**<sup>®</sup>



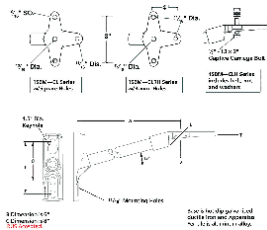
MFR MODEL #	LENGTH	ANGLE	RESCO PART #	PACK. QTY.
1SBM15CTB	15" (38.1 cm)	0°	07806856HUBBELL	5
1SBM18CTB	18" (45.7 cm)	0°	07806858HUBBELL	5
1SBM18AMB	18" (45.7 cm)	15°	07815110CHANCE	6

## 3-Position Single-Phase Cutout/Arrester Bracket

"Cloverleaf" bracket end fitting.



**CHANCE**<sup>®</sup>

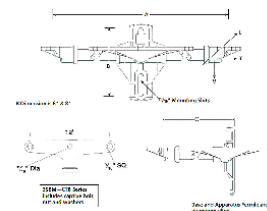


MFR MODEL #	LENGTH	ANGLE	RESCO PART #	PACK. QTY.
1SBM18CLH	18" (45.7 cm)	15°	34276040CHANCE	6

## 2-Position Three-Phase Cutout/Arrester Bracket



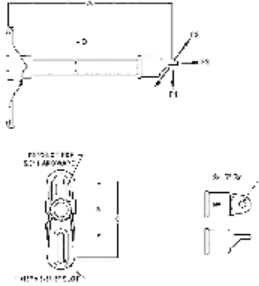
**CHANCE**<sup>®</sup>



MFR MODEL #	LENGTH	ANGLE	RESCO PART #	PACK. QTY.
3SBM4813CTB	48" x 13" standoff	0°	07801813HUBBELL	5
3SBM3613CTB	36" x 13" standoff	0°	07806845HUBBELL	1

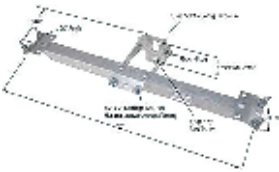


## Cutout/Arrester Bracket



MFR MODEL #	LENGTH	DESCRIPTION	RESCO PART #	PACK. QTY.
GIMA0115DCB	15", 0°	3-Phase, 2-Position	07806840JOSLYN	10
G3MA024813DDB	48" x 13" standoff	Single-Phase, Single-Position	07806844MACLEAN	10

## Terminator and Arrester Bracket



MFR MODEL #	HOLE-TO-HOLE DISTANCE	EXTENSION FROM POLE	MOUNTING HOLE SPACING	RESCO PART #	PACK. QTY.
CTBEMB16PA35	35"	8 7/8"	3 3/8"	07806820CHANCE	4



STORM RESPONSE

1-866-273-5030

# POLE LINE HARDWARE

## Guy Hook Attachment

- Use in down or span guy applications
- Spurs resist down slotting
- The overturning action is resisted by the wide lower curved heel pad



**CHANCE**<sup>®</sup>



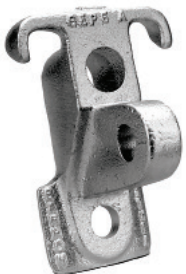
MFR MODEL #	MOUNTING HOLE DIAMETER	LOWER HOLE DIAMETER	LENGTH	RESCO PART #	PACK. QTY.
GH5	11/16"	9/16"	4 3/4"	02150194CHANCE	25
GH6	13/16"	9/16"	4 3/4"	02150195CHANCE	50

## Pole Eye/Guy Hook Combination Attachment

Combines hooks for loop attachment and tongue for clevis attachment to provide a multi-functional guy attachment.



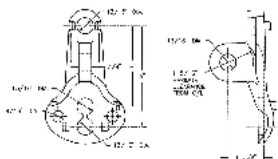
**CHANCE**<sup>®</sup>



MFR MODEL #	MOUNTING HOLE DIAMETER	LOWER HOLE DIAMETER	LENGTH	RESCO PART #	PACK. QTY.
GEP5	11/16"	11/16"	5"	02150216CHANCE	25
GEP5A	13/16"	11/16"	5"	02150275CHANCE	25

## Pole Eye Plate

- Wide variety of mounting hardware options
- Bottom mounting base will accommodate an additional 3/4" diameter through bolt or two 1/2" diameter lag screws
- Includes integral spurs to resist movement



MFR MODEL #	MIN. ULTIMATE STRENGTH	MAX. CLEVIS PIN	GUYING ANGLE	RESCO PART #	PACK. QTY.
PEP-66-45	21,000	3/4"	10 - 90°	46800425MACLEAN	20



## Carriage Bolt

Carriage bolts with square nuts, finished points and rolled threads. Standard heads have square shoulders. Open-hearth steel. Hot dip galvanized.



**CHANCE<sup>®</sup>**



MFR MODEL #	DIAMETER	LENGTH	RESCO PART #	PACK. QTY.
8634 1/2	3/8"	4 1/2"	06310345CHANCE	250
8635	3/8"	5"	06310305CHANCE	250
8636	3/8"	6"	06310310CHANCE	250
8646	1/2"	6"	06310406CHANCE	250

## Single Upset Spool Bolt

Used in rural secondary construction. Includes square nut, round washer and cotter key on short end, and square nut and M-F locknut on long end. Used with spool insulators ANSI 53-2. Hot dip galvanized.



**CHANCE<sup>®</sup>**



MFR MODEL #	DIAMETER	LENGTH	RESCO PART #	PACK. QTY.
7741	5/8"	8"	06390508CHANCE	25
774112	5/8"	9"	06390509CHANCE	25
7742	5/8"	10"	06390510CHANCE	25
7743	5/8"	12"	06390512CHANCE	25

## Double Upset Spool Bolt

Used in rural secondary construction. Includes square nut, round washer and cotter key on short end, and square nut and M-F locknut on long end. Used with spool insulators ANSI 53-2. Hot dip galvanized.



**CHANCE<sup>®</sup>**



MFR MODEL #	DIAMETER	LENGTH	RESCO PART #	PACK. QTY.
7830	5/8"	10"	06350510CHANCE	30
7832	5/8"	12"	06350512CHANCE	25
7834	5/8"	14"	06350514CHANCE	20

# POLE LINE HARDWARE

## Double Arming Bolt

Used in double arm applications because of the ease of installation. Bolt length is measured from the last thread, end to end. Semi-cone point comes on bolts 8" and longer in 1/2", 5/8" and 3/4" diameters. All others have chamfered or rounded ends.



**CHANCE**



MFR MODEL #	DIAMETER	LENGTH	RESCO PART #	PACK. QTY.
8864	5/8"	14"	06330514CHANCE	20
8866	5/8"	16"	06330516CHANCE	20
8868	5/8"	18"	06330518CHANCE	20
8870	5/8"	20"	06330520CHANCE	20
8872	5/8"	22"	06330522CHANCE	20
8874	5/8"	24"	06330524CHANCE	20
8876	5/8"	26"	06330526CHANCE	20
8877	5/8"	28"	06330528CHANCE	15
8886	3/4"	16"	06330616CHANCE	15
8890	3/4"	20"	06330620CHANCE	15
8892	3/4"	22"	06330622CHANCE	15
8894	3/4"	24"	06330624CHANCE	15

## Thimbleye® Straight Bolt

Contoured eye keeps guy strand from kinking, bending or spreading. Drop-forged steel. Hot dip galvanized. Cone-type points.



**CHANCE**



MFR MODEL #	DIAMETER	LENGTH	RESCO PART #	PACK. QTY.
5510	5/8"	10"	06365510CHANCE	25
5512	5/8"	12"	06365512CHANCE	25



## Ovaleye Bolt

Bolts with 5/8" and 3/4" shanks have 1 1/2" x 2" ovaeyes. Drop-forged, galvanized steel bolts have cone type points and rolled threads.



**CHANCE**



MFR MODEL #	DIAMETER	LENGTH	RESCO PART #	PACK. QTY.
29958	5/8"	8"	06361508CHANCE	35
29959	5/8"	9"	06361509CHANCE	25
29960	5/8"	10"	06361510CHANCE	25
29962	5/8"	12"	06361512CHANCE	25
29964	5/8"	14"	06361514CHANCE	25
29966	5/8"	16"	06361516CHANCE	25
29982	3/4"	12"	06361612CHANCE	20
29984	3/4"	14"	06361614CHANCE	20

## Machine Bolt, Square Head

Sometimes referred to as "crossarm" bolts or "through" bolts. The head is marked with an identifying "C" and the bolt includes an assembled square or hex nut that corresponds to the head shape. Bolt length is measured from the underside of the head to the last thread. Semi-cone point comes on bolts 8" and longer in 1/2", 5/8" and 3/4" diameters. All others have chamfered or rounded ends.



**CHANCE**



MFR MODEL #	DIAMETER	LENGTH	RESCO PART #	PACK. QTY.
8705	1/2"	5"	06380405CHANCE	100
8706	1/2"	6"	06380406CHANCE	100
8707	1/2"	7"	06380407CHANCE	100
8708	1/2"	8"	06380408CHANCE	100
8710	1/2"	10"	06380410CHANCE	100
8805	5/8"	5"	06380505CHANCE	50
8806	5/8"	6"	06380506CHANCE	50
8808	5/8"	8"	06380508CHANCE	50
8809	5/8"	9"	06380509CHANCE	50
8810	5/8"	10"	06380510CHANCE	50
8812	5/8"	12"	06380512CHANCE	50
8814	5/8"	14"	06380514CHANCE	50
8816	5/8"	16"	06380516CHANCE	50
8818	5/8"	18"	06380518CHANCE	50
8820	5/8"	20"	06380520CHANCE	50
8910	3/4"	10"	06380610CHANCE	30
8912	3/4"	12"	06380612CHANCE	25
8914	3/4"	14"	06380614CHANCE	25
8916	3/4"	16"	06380616CHANCE	25
8918	3/4"	18"	06380618CHANCE	25
8920	3/4"	20"	06380620CHANCE	25
8922	3/4"	22"	06380622CHANCE	15

# POLE LINE HARDWARE

## Pole Top Bracket

For mounting post-type insulators in pole top position

- Use on wood, steel, composite or concrete poles
- Open neck for wrench movement
- Open bottom slot facilitates installation or removal of bracket
- Offset mounting surface for insulator clearance



**CHANCE**<sup>®</sup>



MFR MODEL #	MOUNTING BOLT	RESCO PART #	PACK. QTY.
IB3	5/8"	07807505HUBBELL	6
IB4	5/8" or 3/4"	07807503HUBBELL	6

## Pole Top Bracket

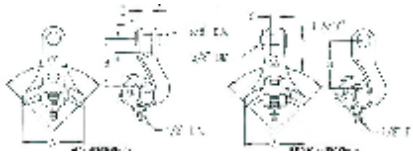
Bracket provides a sturdy base with a 30 degree angle top surface for mounting 5/8" or 3/4" short shank insulator pins or short line post insulator studs. The bottom of the bracket is designed to seat on crossarms, or pole top insulator brackets up to 3 3/4" surface width and is fastened with a 3/4" diameter bolt.



MFR MODEL #	MOUNTING BOLT	RESCO PART #	PACK. QTY.
BPT-58F	5/8"	07807503MACLEAN	8

## Angled Suspension Clamp

Recommended torque on U-bolts = 40-45 ft/lbs.



MFR MODEL #	ULTIMATE STRENGTH	ANGLE DEGREES	RESCO PART #	PACK. QTY.
RALS-1-N	10,000	90	11722200MACLEAN	25
RALS-2-N	10,000	90	11722210MACLEAN	20
FAC-75	11,000	120	11722204MACLEAN	20





## Overhead Side Opening Wedge

- Fastest method of dead-ending ACSR, AAAC and AAC conductor
- Accepts wide range of conductor sizes; high strength aluminum alloy body and jaws
- Requires no wrenches or special tools
- Can be repositioned on conductor during installation
- Plated jaws available to accommodate copper conductors



MFR MODEL #	CONDUCTOR RANGE MINIMUM	CONDUCTOR RANGE MAXIMUM	RESCO PART #	PACK. QTY.
GDW2010A	4 Str AAC; 4 AAAC; 4 ACSR; 4 Str CU	2/0 Str AAC; 2/0 AAAC; 2/0 ACSR; 2/0 Str CU	11724199FARGO	25
GDW2010	4 Str AAC; 4 AAAC; 4 ACSR; 4 Str CU	2/0 Str AAC; 2/0 AAAC; 2/0 ACSR; 2/0 Str CU	11724201FARGO	25
GDW2040A	4 Str AAC; 4 AAAC; 4 ACSR; 4 Str CU	4/0 Str AAC; 4/0 AAAC; 4/0 ACSR; 3/0 Str CU	11724202FARGO	25

## Wedge Clamp

- Mechanical holding devices used for strain relief in service applications
- Designed for low tension applications only
- Flexible bails are available and designed for use with hooks and eyes



MFR MODEL #	CONDUCTOR RANGE	CONDUCTOR DIAMETER	LENGTH	RESCO PART #	PACK. QTY.
7195	2 - 6 ACSR	0.16" - 1.33"	6 1/2"	11780019MACLEAN	100
MFR MODEL #	CONDUCTOR RANGE	CONDUCTOR DIAMETER	LENGTH	RESCO PART #	PACK. QTY.
W20-1	1/0 - 4 ACSR	0.257-0.395"	12 1/2"	11780025BLACKBURN	50
W40-1	2/0 - 4/0 ACSR	0.447-0.563	12 3/4"	11780040BLACKBURN	50



## Straight Line Spring-Loaded Dead-End Clamp

For distribution and light transmission construction with all aluminum, ACSR or aluminum alloy conductor. The spring-loaded keeper permits easy conductor insertion and lower installation cost. Captive nuts prevent disassembly and loss of hardware during installation on energized or de-energized lines. The pivotal keeper design avoids friction between body and keeper during installation.



MFR MODEL #	CLAMPING RANGE: ACSR	CLAMPING RANGE: ALUMINUM	CLAMPING RANGE:	RESCO PART #	PACK. QTY.
ADEZ-47N	6 (6/1) - 2/0 (6/1)	4 (7) - 3/0 (9)	0.18" - 0.47" (4.57 - 11.98mm)	11722224ANDERSON	25
ADEZ-57N	4 (6/1) - 4/0 (6/1)	4 (7) - 4/0 (19)	0.23" - 0.57" (5.84 - 14.48mm)	11722226ANDERSON	25
ADEZ-88N	2/0 (6/1) - 556 (18/1)	3/0 (7) - 556 (37)	0.44" - 0.88" (11.18 - 22.25mm)	11722339ANDERSON	10



# POLE LINE HARDWARE

## Straight Line Side Opening Dead-End Clamp

For distribution and light transmission construction with AAC, AAAC and ACSR conductors. The vertical spring-loaded keeper provides the easiest installation of any current bolted strain clamp.



**ANDERSON™**



MFR MODEL #	CLAMPING RANGE: ACSR	CLAMPING RANGE: ALUMINUM	CLAMPING RANGE:	RESCO PART #	PACK. QTY.
ASOD3981N	6 (6/1) - 2/0 (6/1)	4 (7) - 2/0 (19)	0.19" - 0.48"	11724204ANDERSON	25
ASOD6841N	4 (6/1) - 336.4 (18/1)	2 (7) - 350 (37)	0.25" - 0.69"	11724205ANDERSON	25

## Light Duty Dead-End Clamp

For distribution and light transmission construction with all aluminum, ACSR or aluminum alloy conductor.



**ANDERSON™**



MFR MODEL #	CLAMPING RANGE: ACSR	CLAMPING RANGE: ALUMINUM	CLAMPING RANGE:	RESCO PART #	PACK. QTY.
PG-46-N	6 (6/1) - 3/0 (6/1)	6 - 7 Str - 3/0-19 Str	0.18" - 0.52" (4.57-13.2mm)	11723226ANDERSON	25
PG-57-N	4 (6/1) - 4/0 (6/1)	3-7 Str - 4/0-19 Str	0.25" - 0.57" (6.35-14.48mm)	11723222ANDERSON	25
PG-70-N	101.8 (12/7) - 336.4 (26/7)	3/0-7 Str - 400-37 Str	0.46" - 0.73" (11.68-18.54mm)	11723215ANDERSON	20
DE-46-N	6 (6/1) - 3/0 (6/1)	6 - 7 Str - 3/0-19 Str	0.18" - 0.52" (4.57-13.21mm)	11723227ANDERSON	40

## Quadrant Strain Dead-End Clamp

For dead-ending static wires.



**ANDERSON™**



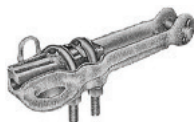
MFR MODEL #	CLAMPING RANGE: ACSR	CLAMPING RANGE: COPPER	CLAMPING RANGE:	RESCO PART #	PACK. QTY.
MD-52-N	6 (6/1) - 4/0 (6/1)	6 Sol - 4/0 Str	0.160" - 0.563" (4.06-14.30mm)	11724209ANDERSON	25

## Straight Line Strain Dead-End Clamp

For distribution and light transmission construction with all aluminum, ACSR or aluminum alloy conductor. These clamps have high holding power and large range taking ability.



**ANDERSON™**



MFR MODEL #	CLAMPING RANGE: ACSR	CLAMPING RANGE: ALUMINUM	CLAMPING RANGE:	RESCO PART #	PACK. QTY.
ADS-88-N	2 (6/1) - 556.5 (18/1)	1-7 Str. - 556.5-37 Str.	0.31" - 0.88" (7.87-22.35mm)	11724226ANDERSON	20

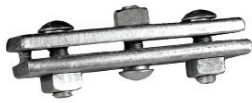


## Bolted Guy Clamp

Parallel grooves trap strand tightly without marring. Plate halves align evenly for easy application. Each bolt has a shoulder to prevent turning while tightening. Hot dip galvanized.



**CHANCE**



MFR MODEL #	STRAND SIZED	CLAMPING BOLTS	LENGTH / WIDTH	RESCO PART #	PACK. QTY.
6460	3/8" to 5/8"	Three 5/8"	6" / 2 1/8"	11732240CHANCE	10
6461	5/16" to 1/2"	Three 5/8"	6" / 1 3/32"	11732291CHANCE	20

## Anchor Shackle

Used principally for attaching suspension-insulator units to the pole. Drop forged. Hot dip galvanized.



MFR MODEL #	PIN	MIN. ULTIMATE STRENGTH	LENGTH	RESCO PART #	PACK. QTY.
5801	5/8"	20,000 lbs	12 1/2"	12302800CHANCE	50



**CHANCE**

MFR MODEL #	PIN	MIN. ULTIMATE STRENGTH	LENGTH	RESCO PART #	PACK. QTY.
ASH-45	5/8"	25,000 lbs	12 3/4"	12302850MACLEAN	50



## Spool Clevis

Designed to develop high strength on dead-ends or line pulls.



MFR MODEL #	HEIGHT	LENGTH	STEEL SIZE	MOUNTING HOLE SIZE	RESCO PART #	PACK. QTY.
0327	3 1/4"	4"	3/16" x 4"	11/16" x 3/4"	07804500CHANCE	25
0340	3 5/16"	5"	3/16" x 1 1/2"	11/16" x 3/4"	12301304CHANCE	25
0341	2 3/8"	4 1/16"	3/16" x 1 1/2"	11/16" x 3/4"	12301301CHANCE	50
0352	3 1/4"	5"	3/16" x 1 1/2"	N/A	12301201CHANCE	30



**CHANCE**



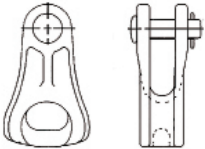
MFR MODEL #	HEIGHT	LENGTH	STEEL SIZE	MOUNTING HOLE SIZE	RESCO PART #	PACK. QTY.
J1300	3 1/4"	4"	4 3/4" x No 11	11/16" x 3/4"	07804500JOSLYN	25



# POLE LINE HARDWARE

## Thimble Clevis

Thimble clevises are used in guying and dead-ending applications to be the interface connection fitting used in attaching guy wire, conductor, wire grips or dead-end bails to eye type fittings of insulators, eye bolts and pole eye plates. Their design includes an integral pulling eye area, which accommodates hooks used in tensioning the guy wire or conductor.



MFR MODEL #	HEIGHT	WIDTH	PIN DIAMETER	CABLE GROOVE DIAMETER	RESCO PART #	PACK. QTY .
CT-88	3 9/16"	2 1/4"	5/8"	0.88"	12301500MACLEAN	25
CT-88H	4 3/8"	2 1/4"	3/4"	0.88"	12301505MACLEAN	25
SA201	1 7/8"	2 1/4"	5/8"	0.88"	12301504MACLEAN	50

## Ground Wire Clips

Non-static ground wire clips eliminate a major source of radio and television interference. They prevent trouble-causing air gaps and static discharges by permanently maintaining a high pressure contact between the clip and the ground wire.

## Cooper Power Systems

by **F.T.N**



MFR MODEL #	GROUND WIRE	RESCO PART #	PACK. QTY.
12326	#4 STR	12600400KEARNEY	100

## Guy Wire Serving Sleeve

For holding down the loose end of guy strand projecting beyond the guy clamp. Chance® Serving Sleeves, which have a flared end to speed application, are faster to apply than wire-wrap sleeves. Hot dip galvanized.



**CHANCE**



MFR MODEL #	STRAND SIZE	LENGTH	RESCO PART #	PACK. QTY.
6454	3/8"	1 3/4"	12601538CHANCE	500
6455	7/16"	2"	12601544CHANCE	100

## Secondary Hook

Hooks used to attach wedge type service drops and dead-end clamps to crossarms, poles or buildings.



**CHANCE**



MFR MODEL #	LENGTH	THREAD	RESCO PART #	PACK. QTY.
C2050190	4 3/4"	7/16" Dia. Fetter	31504000CHANCE	200



## Guy Guard

**ELECTRICAL MATERIALS COMPANY**  
Products for the Utility Industry



MFR MODEL #	LENGTH	COLOR	RESCO PART #	PACK. QTY.
70-70R-WOC	8'	Orange	29300856EM	25
70-70YORSWOC	8'	Yellow/Orange Stripe	29300857EM	25
70-7Y	8'	Yellow	29300860EM	25
70-7YORS	8'	Yellow/Orange Stripe	29300861EM	25
70-7Y-WOC	8'	Yellow	29300862EM	25
70-6YWOC	8'	Yellow	29300863EM	25
70-7YTIE	8'	Yellow	29300875EM	25

## Overhead Primary Hot Line Tap Clamp

For Aluminum, ACSR and armor rod covered aluminum or ACSR conductor



**ANDERSON™**



MFR MODEL #	MATERIAL	RUN CONDUCTOR DIAMETER	TAP CONDUCTOR DIAMETER	RESCO PART #	PACK. QTY.
S1530AGP	Tin-plated Aluminum	0.162" - 0.745"	0.162" - 0.547"	17411900ANDERSON	50
AH4GP	Tin-plated Aluminum	0.157" - 0.905"	0.157" - 0.593"	17411901ANDERSON	50
S1530AA	Aluminum	0.162" - 0.745"	0.162" - 0.547"	17411904ANDERSON	50
BC-2/0	Copper	0.128" - 0.414"	0.128" - 0.414"	17411937ANDERSON	50
S1530CC	Copper	0.162" - 0.745"	0.162" - 0.547"	17411940ANDERSON	25
S1540AGP	Tin-plated Aluminum	0.502" - 1.031"	0.198" - 0.703"	17411972ANDERSON	50
S1520AGP	Tin-plated Aluminum	0.128" - 0.414"	0.128" - 0.438"	17411976ANDERSON	100
S1545AGP	Tin-plated Aluminum	0.939" - 1.490"	0.198" - 0.703"	17411991ANDERSON	20
BH-00	Copper	0.128" - 0.414"	0.128" - 0.414"	17412090ANDERSON	50



MFR MODEL #	MATERIAL	RUN CONDUCTOR DIAMETER	TAP CONDUCTOR DIAMETER	RESCO PART #	PACK. QTY.
C1530AP	Aluminum/Copper	0.162" - 0.745"	0.152" - 0.682"	17411900MACLEAN	25
C1530P	Copper	0.162" - 0.745"	0.152" - 0.682"	17412078MACLEAN	25
C1520	Copper	0.128" - 0.414"	0.128" - 0.414"	17411937JOSLYN	25
C1540AP	Aluminum/Copper	0.502" - 1.031"	0.198" - 0.703"	17411972JOSLYN	25

**STORM RESPONSE**

**1-866-273-5030**

# POLE LINE HARDWARE

## Thimbleye® Eyenuts

For attaching to thru-bolts, or threaded end of straight or angle-Thimbleye® bolts for straight-away head guys. Drop-forged galvanized steel. Nuts are contoured to minimize bending and kinking of guy strand.



**CHANCE**



MFR MODEL #	TAPPED FOR	THIMBLE DIAMETER	RESCO PART #	PACK. QTY.
6510	5/8" Bolt	1 1/2"	42906063CHANCE	50
6511	3/4" Bolt	1 1/2"	42906064CHANCE	50

## Standard Eyenuts

Most commonly used for dead-ending, back-guying and attaching pole head guys on the threaded ends of crossarm bolts. Drop-forged hot dip galvanized steel.



**CHANCE**



MFR MODEL #	TAPPED FOR	SIZE	RESCO PART #	PACK. QTY.
6502	5/8" Bolt	1/2"	42901063CHANCE	75
6503	3/4" Bolt	1/2"	42901075CHANCE	75

## Square Nut

Made to give tight connections. Galvanized.



**CHANCE**



MFR MODEL #	BOLT SIZE	WIDTH	RESCO PART #	PACK. QTY.
55084P	5/8"	1"	42901463CHANCE	250
55085P	3/4"	1 1/8"	42901475CHANCE	250
56538P	7/8"	1 3/16"	42901478CHANCE	100



## Curved Lock Nut

Made to give tight connections. Galvanized.



**CHANCE**



MFR MODEL #	BOLT SIZE	WIDTH	RESCO PART #	PACK. QTY.
3510	3/8"	5/8"	42903038CHANCE	1,000
3511	1/2"	13/16"	42903050CHANCE	2,000
3512	5/8"	1"	42903063CHANCE	1,200
3513	3/4"	1 1/8"	42903075CHANCE	1,000
3514	7/8"	1 5/8"	42903087CHANCE	750

## Nylon Pole Top Insulator Pin

Nylon threads are an alternative to lead threads on Chance® hot-dip galvanized pole top pins.

- Improved impact resistance
- Firm, more resilient insulator fit
- Environmental friendliness
- Elimination of lead disposal concern



**CHANCE**



MFR MODEL #	MOUNTING HOLE	LENGTH	RESCO PART #	PACK. QTY.
2162	11/16"	15"	45611115CHANCE	15
2170	11/16"	18"	45612170CHANCE	15
2174P	11/16"	20"	45612175CHANCE	10
2195	11/16"	20"	45612320CHANCE	10
2199	11/16"	20"	45611120CHANCE	10
2199P	11/16"	20"	45411124CHANCE	10

## Offset Base Pole Top

Hot dip galvanized pressed steel, 1' lead thread.



**CHANCE**



MFR MODEL #	MOUNTING HOLE	LENGTH	RESCO PART #	PACK. QTY.
C206-0271	8"	4 1/2"	45613118CHANCE	10

# POLE LINE HARDWARE

## Clamp-Type Crossarm Pin

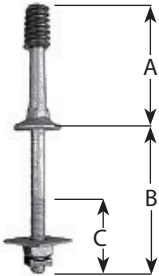
Clamp-type crossarm pins (saddle pins) can be used for straight line, angle or corner construction. The clamping design does not require cutting or drilling of the crossarm. The back plate has raised projections to prevent slippage.



MFR MODEL #	CROSSARM SIZES	CARRIAGE BOLTS	RESCO PART #	PACK. QTY.
14322	3 3/4" x 4 3/4"	5/8" x 7	45411151CHANCE	8

## Shank-Type Crossarm Pin

The forged design of low voltage insulator pins includes flats for wrench engagement and a wide base to distribute load stresses. Furnished with on each 2" x 2" x 1/8" square washer, square nut and curved locknut.



MFR MODEL #	A	B	C	RESCO PART #	PACK. QTY.
881	5"	5 3/4"	3"	45412111CHANCE	25
881P	5"	5 3/4"	3"	45412112CHANCE	25

"P" signifies nylon threads

MFR MODEL #	A	B	C	RESCO PART #	PACK. QTY.
J203Z	5"	5 3/4"	4"	45412112JOSLYN	25

"Z" signifies nylon threads



## Line Post Insulator Stud

Serrated collar and lockwasher secure unit to line post insulator and prevent accidental disassembly. Cut threads above serrated collar, rolled threads below collar.



MFR MODEL #	DIAMETER	LENGTH	RESCO PART #	PACK. QTY.
DF19M1	5/8"	1 3/4"	45413111CHANCE	100
DF19M2	5/8"	7"	45412244CHANCE	25
DF19M3	3/4"	1 3/4"	45412243HUBBELL	100
DF19M4	3/4"	7"	45412250CHANCE	40





## U-Guard Fastener

Lag screw with pre-assembled washer, rubber gasket and hex head.

**ELECTRICAL MATERIALS COMPANY**  
Products for the Utility Industry



MFR MODEL #	DIAMETER	LENGTH	RESCO PART #	PACK. QTY.
106M	1/4"	2"	55504000EM	100

## Lag Screw

Description



MFR MODEL #	DIAMETER	LENGTH	THREAD LENGTH	RESCO PART #	PACK. QTY.
508743	3/8"	3"	2"	55504333CHANCE	25
508754	1/2"	4"	2 5/8"	55504440CHANCE	40
508500	1/2"	4"	2 5/8"	55504447CHANCE	100

## Staples

Used to secure ground wire, ground wire molding and cable guards to wood poles.



MFR MODEL #	L x W x D	FINISH	RESCO PART #	PACK. QTY.
7511 3/4	1 1/2" x 1/4" x 0.148"	Electro Zinc	61802000CHANCE	50

**REDMORE®**

MFR MODEL #	L x W x D	FINISH	RESCO PART #	PACK. QTY.
CG1525K	1 1/2" x 1/4" x 0.148"	Hot Dipped Galvanized	61802001REDMORE	50
CC1538Q	1 1/2" x 3/8" x 0.162"	Copperclad	61802420REDMORE	50
CC2050Q	2" x 1/4" x 0.162"	Copperclad	61802931REDMORE	50

STORM RESPONSE

1-866-273-5030

# POLE LINE HARDWARE

## Wireholder

For use with triplex-type service cable.



**CHANCE**

MFR MODEL #	LENGTH	SCREW DIAMETER	SIZE OF OPENING	RESCO PART #	PACK. QTY.
C2070139	3"	5/16 Grade 5 Lag Screw	7/8" W x 13/16" T	75102015CHANCE	750
31145	3"	11/32" (No 22) Lag	1" Dia	75102023CHANCE	500



MFR MODEL #	LENGTH	SCREW DIAMETER	SIZE OF OPENING	RESCO PART #	PACK. QTY.
J0588Z	1 1/4" - 3"	11/32" (No 22) Lag	1" Dia	75103000JOSLYN	250

## Square Washers



**CHANCE**



MFR MODEL #	BOLT SIZE	SIZE	HOLE DIAMETER	RESCO PART #	PACK. QTY.
DF4W15	3/4"	4" x 4" x 3/16"	13/16"	71013051CHANCE	50
GCW41	3/4"	4" x 4" x 1/4"	13/16"	71013653CHANCE	50
6811	1/2"	2" x 2" x 1/8"	9/16"	71020131CHANCE	300
6812	5/8"	2" x 2" x 1/8"	11/16"	71020141CHANCE	300
6813	5/8"	2 1/4" x 2 1/4" x 3/16"	11/16"	71020441CHANCE	200
6814	3/4"	2 1/4" x 2 1/4" x 3/16"	13/16"	71020451CHANCE	200
6817	3/4"	3" x 3" x 1/4"	13/16"	71021451CHANCE	50
6818	3/4"	4" x 4" x 3/16"	13/16"	71022861CHANCE	50
681812	3/4"	4" x 4" x 1/4"	7/8"	71014051CHANCE	25
6822 1/2	3/4"	3" x 3" x 1/4"	13/16"	71011341CHANCE	75
PS6822	5/8"	2 1/2" x 2 1/2" x 3/16"	11/16"	71023652CHANCE	150
6823 1/2	5/8"	3" x 3" x 1/4"	11/16"	71011541CHANCE	50
6825	3/4"	3 1/4" x 3 1/4" x 1/4"	13/16"	71023654CHANCE	50



MFR MODEL #	BOLT SIZE	SIZE	HOLE DIAMETER	RESCO PART #	PACK. QTY.
CW33-5	5/8"	3" x 3" x 5/16"	11/16"	71011746MACLEAN	75
J6829	7/8"	4" x 4" x 1/4"	15/16"	71013071MACLEAN	50



## Round Washers



MFR MODEL #	BOLT SIZE	SIZE	HOLE DIAMETER	RESCO PART #	PACK. QTY.
6805	5/8"	1 3/4" Dia x 10 Ga (0.1345")	11/16"	71020455CHANCE	500
PS6803	1/2"	1 3/8" Dia x 12 Ga (0.1046")	9/16"	71023652CHANCE	1,000

## Spring Clip Washers



MFR MODEL #	BOLT SIZE	SIZE	HOLE DIAMETER	RESCO PART #	PACK. QTY.
3539	1/2"	5/32" x 1"	9/16"	71050050CHANCE	200
3540	5/8"	1/4" x 1 3/4"	11/16"	71050058CHANCE	50
3541	3/4"	1/4" x 1 3/4"	13/16"	71050034CHANCE	50
C2050436	7/8"	1/4" x 1 3/4"	15/16"	71050078CHANCE	50

## Double Coil Washers

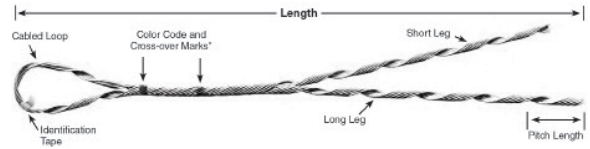


MFR MODEL #	BOLT SIZE	SIZE	HOLE DIAMETER	RESCO PART #	PACK. QTY.
C2050185	1/2"	5/32" x 13/64"	9/16"	71050814CHANCE	750
C2050186	5/8"	3/16" x 15/64"	11/16"	71050816CHANCE	500
C2050187	3/4"	7/32" x 17/64"	13/16"	71050817CHANCE	250

# FORMED WIRE

## GUY-GRIP® Dead-End

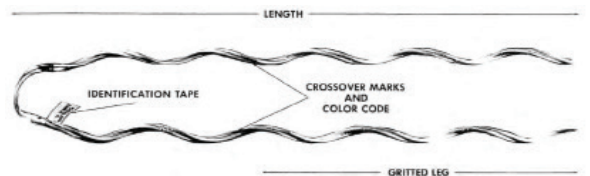
Installed at the top, the breaker and the anchor, provide today's most effective method for securing guy strand. This unique, one-piece dead-end is neat in appearance and free from bolts or high-stress holding devices. The GUY-GRIP® Dead-End was the first to offer the cabled loop, a feature that provides more durability, easier tensioning and adaptability to multiple guying.



MFR MODEL #	LENGTH	CONDUCTOR SIZE	MEAN DIAMETER	COLOR CODE	RESCO PART #	PACK. QTY.
AWDE-4113	24"	3 # 8 8M	0.277" 0.272"	Blue	11771048PREFORMED	50
AWDE-4116	26"	3 # 7 10M 5/16" - 7 # 10	0.311" 0.306" 0.306"	Black	11771047PREFORMED	50
GDE-1107	35"	3/8"	0.356", 0.360"	Orange	11772087PREFORMED	50
GDE-1108	38"	7/16"	0.435"	Green	11772089PREFORMED	25

## Service-Grip Dead-End

Manufactured of aluminum-covered steel, is designed for bare neutral messengers of self-supporting cable used in making service drops. The dead-end is recommended for service drops by reason of minimum length, economy and neatness of appearance. Mechanical strength meets the requirements for NESC Grade "N", Rule 263-E, Supply Services, Spans not exceeding 150 feet.

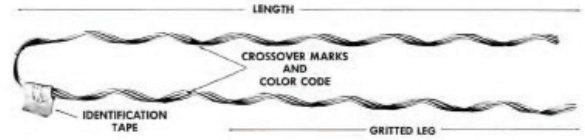


MFR MODEL #	LENGTH	CONDUCTOR SIZE	DIAMETER RANGE	COLOR CODE	RESCO PART #	PACK. QTY.
SG-4500	11"	#6, 6/1 All-Alum.; #6, 7W Alum. Alloy; #6, 6/1 ACSR; #6, 6/1, #6, 7W Comp.	0.169" - 0.198"	Blue	11773023PREFORMED	300
SG-4502	13"	#4, 7W All-Alum. & Alum. Alloy; #4, 6/1, #4, 7/1 ACSR & Comp.	0.225" - 0.257"	Orange	11773021PREFORMED	300
SG-4504	15"	#2, 7W All-Alum. & Alum. Alloy; #2, 6/1, #1, 7W Comp.; #2, 6/1, #2, 7/1 ACSR	0.290" - 0.325"	Red	11773019PREFORMED	200
SG-4506	19"	1/0, 7W All-Alum. & Alum. Alloy; 1/0, 6/1, 2/0, 7W Comp.; 1/0, 6/1 ACSR	0.361" - 0.400"	Green	11773025PREFORMED	100



## Distribution-Grip Dead-End

Manufactured of aluminum covered steel, designed for single-pole distribution construction. Mechanical strength meets the requirements of primaries, secondaries and substation feeders. Distribution-Grip Dead-End is recommended for direct application over plastic jacketed (not fabric covered) conductor. Coated dead-ends are also recommended for jacketed conductor. The Distribution-Grip Dead-End is designed to grip the conductor uniformly to prevent distortion of the conductor. It also offers a unique design that eliminates bolts, nuts, washers and other component parts that may become lost or damaged during installation or in service.



MFR MODEL #	LENGTH	CONDUCTOR SIZE	DIAMETER RANGE	RESCO PART #	PACK. QTY.
DG-4541	17"	#4, 7W All-Alum. & Alum. Alloy; #4, 6/1 Comp. ACSR	0.229" - 0.257"	11773121PREFORMED	100
DG-4542	24"	#2, 7W All-Alum. & Alum. Alloy; #2, 6/1 Comp. ACSR	0.290" - 0.325"	11773122PREFORMED	100
DG-4544	26"	1/0, 7W All-Alum. & Alum. Alloy; 1/0, 6/1 Comp. ACSR	0.365" - 0.409"	11773123PREFORMED	50

## Armor Rod

PREFORMED™ Armor Rods are intended to protect against bending, compression, abrasion, arc-over and to provide repair. The degree of protection needed on a specific line depends upon a number of factors such as line design, temperature, tension, exposure to wind flow and vibration history on similar construction in the same area.



MFR MODEL #	LENGTH	CONDUCTOR SIZE	DIAMETER RANGE	RESCO PART #	PACK. QTY.
AR-0110	40"	#4, 6/1, 7/1 #4, 7W, Alum. Alloy	0.244" - 0.259"	53717041PREFORMED	50
AR-0114	44"	#2, 6/1, 7/1 #2, 7W Alum. Alloy	0.309" - 0.326"	53717021PREFORMED	50
AR-0118	52"	1/0, 6/1 1/0, 7W Alum. Alloy	0.390" - 0.413"	53717101PREFORMED	50
AR-0122	56"	3/0, 6/1 3/0, 7W Alum. Alloy; c4/0, 6/1 Comp.	0.491" - 0.521"	53717301PREFORMED	25
AR-0124	60"	4/0, 6/1	0.552" - 0.585"	53717401PREFORMED	25
AR-0129	60"	300 kcmil, 26/7	0.680" - 0.703"	53717406PREFORMED	18
AR-0130	72"	336.4 kcmil, 26/7	0.704" - 0.740"	53717331PREFORMED	18

# FORMED WIRE

## C-Neck WRAPLOCK® Tie

WRAPLOCK® Ties secure conductors in the top groove of interchangeable head-style insulators. They provide an improved method of securing conductor compared to clamp-top insulators or hand ties over armor rods. The WRAPLOCK® Tie provides superior protection by eliminating abrasion rather than sacrificing outside surfaces to abrasion.



MFR MODEL #	CONDUCTOR SIZE	DIAMETER RANGE	RESCO PART #	PACK. QTY.
WTC-0100	#4, 6/1-7/1; #4, 7W Alum. Alloy	0.248" - 0.259"	67900050PREFORMED	100
WTC-0106	#2, 6/1-7/1; #2, 7W Alum. Alloy	0.315" - 0.327"	67900106PREFORMED	100
WTC-0112	1/0, 6/1 1/0, 7W Alum. Alloy	0.395" - 0.411"	67900112PREFORMED	100
WTC-0116	3/0, 6/1 3/0, 7W Alum. Alloy; 4/0, 7W All-Alum.	0.493" - 0.522"	67900116PREFORMED	50
WTC-0117	3/0, AWAC, 5/2 4/0, 19W, All-Alum.; 266.8, 7W-19W Comp.	0.523" - 0.554"	67900117PREFORMED	50
WTC-0118	4/0, 6/1 4/0, 7W Alum. Alloy; 266.8, 7W-19W All-Alum.	0.555" - 0.594"	67900118PREFORMED	50
WTC-0119	266.8, 18/1 300, 18W-37W All-Alum.	0.595" - 0.630"	67900119PREFORMED	50
WTC-0121	336.4, 18/1-36/1 336.4, 19W All-Alum.; 350, 19W-37W, All-Alum.	0.665" - 0.705"	67900121PREFORMED	50
WTC-0122	336.4, 26/7-30/7 397.5, 19W All-Alum.	0.706" - 0.747"	67900122PREFORMED	50
WTC-0124	477, 18/1, 36/1 500, 19W All-Alum	0.796" - 0.846"	67900124PREFORMED	50
WTC-0126	636, 18/1, 36/1 636, 37W All-Alum.; 556.5M, 19W Alum. Alloy	0.901" - 0.958"	67900127PREFORMED	50

## F-Neck WRAPLOCK® Tie

WRAPLOCK® Ties secure conductors in the top groove of interchangeable head-style insulators. They provide an improved method of securing conductor compared to clamp-top insulators or hand ties over armor rods. The WRAPLOCK® Tie provides superior protection by eliminating abrasion rather than sacrificing outside surfaces to abrasion.



MFR MODEL #	CONDUCTOR SIZE	DIAMETER RANGE	RESCO PART #	PACK. QTY.
WTF-0200	#4, 6/1-7/1; #4, 7W Alum. Alloy	0.248" - 0.259"	67900200PREFORMED	100
WTF-0206	#2, 6/1-7/1; #2, 7W Alum. Alloy	0.315" - 0.327"	67900206PREFORMED	100
WTF-0212	1/0, 6/1 1/0, 7W Alum. Alloy	0.395" - 0.411"	67900212PREFORMED	100
WTF-0217	3/0, AWAC, 5/2 4/0, 18/1 4/0, 19W All-Alum.; 266.8, 7W-19W Comp.	0.523" - 0.554"	67900217PREFORMED	50
WTF-0218	4/0, 6/1 4/0, 7W Alum. Alloy; 266.8, 7W-19W All-Alum.	0.555" - 0.594"	67900218PREFORMED	50
WTF-0222	336.4, 26/7-30/7 397.5, 19W All-Alum.	0.706" - 0.747"	67900220PREFORMED	50
WTF-0224	477, 18/1, 36/1 500, 19W All-Alum.	0.796" - 0.846"	67900224PREFORMED	50
WTF-0226	636, 18/1, 36/1 636, 37W All-Alum.; 556.5, 19W Alum. Alloy	0.901" - 0.958"	67900226PREFORMED	50
WTF-0229	954, 36/1 954, 37W All-Alum.; 795, 37W Alum. Alloy	1.084" - 1.151"	67900222PREFORMED	25



## Double-Side Tie

Manufactured of aluminum-covered steel wire, designed to secure conductors on double-arm construction in the side groove of interchangeable head-style insulators. They are intended for larger line angles than top groove style ties, such as Double-Support Ties.



MFR MODEL #	CONDUCTOR SIZE	DIAMETER RANGE	RESCO PART #	PACK. QTY.
DBST-1100	#4, 6/1-7/1; #4, 7W Alum. Alloy	0.245" - 0.277"	67900604PREFORMED	50
DBST-1103	1/0, 7W All Alum.; 1/0, 6/1 1/0, 7W Alum. Alloy	0.358" - 0.405"	67900610PREFORMED	50
DBST-1106	4/0, 7W All Alum.; 4/0, 6/1 4/0, 7W Alum. Alloy	0.521" - 0.588"	67900613PREFORMED	50
DBST-1108	336.4, 18/1 336.4, 19W All Alum.; 397.5, 19W All Alum.	0.666" - 0.755"	67900614PREFORMED	50
DBST-1109	477, 19W, 37W, All Alum.; 477, 18/1, 24/7, 26/7	0.756" - 0.858"	67900616PREFORMED	50
DBST-1110	556.5, 26/7, 636, 18/1 700, 37W, 61W All Alum.	0.859" - 0.968"	67900619PREFORMED	50
DBST-1111	795, 37W, 61W, All Alum.; 715.5, 24/7 795, 54/7	0.969" - 1.096"	67900618PREFORMED	50

## Spool Tie

Intended for use on aluminum based conductors with diameters from 0.190" to 0.968". Spool Ties listed in this section are designed to be applied to ANSI Class 53-1, 53-2, and 53-3 spool insulators which have 1 3/4" neck diameters. "F" neck size side ties can be used for application on ANSI Class 53-4 and 53-5, which have 2 7/8" neck diameters. To insure proper fit and service life of the Spool Tie, it is recommended only spool insulators with uniform dimensions, as described by the latest (C29.3) ANSI standards, be used.



MFR MODEL #	CONDUCTOR SIZE	DIAMETER RANGE	RESCO PART #	PACK. QTY.
SPL-1352-P	#4, 6/1, 7/1, #4, 7W Alum. Alloy	0.245" - 0.277"	67901306PREFORMED	100
SPL-1354-P	#2, 6/1, 7/1 #2, 7W Alum. Alloy; #1, 6/1	0.316" - 0.357"	67901312PREFORMED	100
SPL-1355-P	1/0, 7W All Alum.; 1/0, 6/1 1/0, 7W Alum. Alloy	0.358" - 0.405"	67901318PREFORMED	100
SPL-1357P	3/0, 7W All Alum.; 3/0, 6/1 3/0, 7W Alum. Alloy	0.460" - 0.520"	67901322PREFORMED	100
SPL-1358-P	4/0, 7W All Alum.; 4/0, 6/1 4/0, 7W Alum. Alloy	0.521" - 0.588"	67901324PREFORMED	50
SPL-1360-P	336.4, 18/1 336.4, 19W All Alum.; 397.5, 19W All Alum.; 400, 19W, 37W All Alum.	0.666" - 0.755"	67901326PREFORMED	50
SPL-1361-P	477, 19W, 37W All Alum.; 477, 18/1, 24/7, 26/7, 556.5, 19W All Alum.	0.756" - 0.858"	67901327PREFORMED	50
SPL-1362P	556.5, 26/7, 636, 18/1 700, 37W, 61W All Alum.	0.859" - 0.968"	67901328PREFORMED	50

# FORMED WIRE

## EZ-WRAP® Spool Tie

Intended for use on aluminum based conductors with diameters from 0.190" to 0.968". EZ-WRAP® Spool Ties listed in this section are designed to be applied to only ANSI Class 53-1, 53-2 and 53-3 spool insulators which have 1 3/4" neck diameters. To insure proper fit and service life of the EZ-WRAP® Spool Tie, it is recommended only spool insulators with uniform dimensions, as described by the latest (C29.3) ANSI standards, be used.



MFR MODEL #	CONDUCTOR SIZE	DIAMETER RANGE	RESCO PART #	PACK. QTY.
EZSP-4372	#4 6/1, 7/1, #4 7W Alum. Alloy	0.245 - 0.277	67901400PREFORMED	100
EZSP-4374	#2 6/1, 7/1, #2 7W Alum. Alloy; #1 6/1	0.316 - 0.357	67901402PREFORMED	100
EZSP-4375	1/0 7W All Alum.; 1/0 6/1, 1/0, 7W Alum. Alloy	0.358 - 0.405	67901403PREFORMED	100
EZSP-4378	4/0 7W All Alum.; 4/0 6/1, 4/0 7W Alum. Alloy	0.521 - 0.588	67901406PREFORMED	100
EZSP-4379	266.8 37W All Alum.; 266.8 18/1, 336.4 19W All Alum.	0.589 - 0.665	67901407PREFORMED	100
EZSP-4380	336.4 18/1, 397.5 19W All Alum.; 400 19W, 37W All Alum.	0.666 - 0.755	67901408PREFORMED	100
EZSP-4382	556.5 26/7, 636 18/1, 700 37W, 61W All Alum.	0.859 - 0.968	67901410PREFORMED	100

## Double Support Tie

Intended for use on aluminum based conductors with diameters from 0.245" to 1.240". Each Double Support Tie covers a range of conductor diameters. Double Support Ties are designed for installation on double insulator construction in the top groove of interchangeable insulators. To insure proper fit and service life, it is recommended only insulators with uniform dimensions, as described by the ANSI insulator standards, be used.



MFR MODEL #	CONDUCTOR SIZE	DIAMETER RANGE	RESCO PART #	PACK. QTY.
DST-0150	#4, 6/1, 7/1 #4, 7W Alum. Alloy	0.245" - 0.277"	67902100PREFORMED	50
DST-0152	#2, 6/1, 7/1 #2, 7W Alum. Alloy; #1, 6/1	0.316" - 0.357"	67902106PREFORMED	50
DST-0153	1/0, 7W All Alum.; 1/0, 6/1 1/0, 7W Alum. Alloy	0.358" - 0.405"	67902112PREFORMED	50
DST-0155	3/0, 7W All Alum.; 3/0, 6/1 3/0, 7W Alum. Alloy	0.460" - 0.520"	67902116PREFORMED	50
DST-0156	4/0, 7W All Alum.; 4/0, 6/1 4/0, 7W Alum. Alloy	0.521" - 0.588"	67902118PREFORMED	50
DST-0158	336.4, 18/1, 26/7 397.5, 19W All Alum.; 400, 19W, 37W All Alum.	0.666" - 0.755"	67902122--POLKBURN	50
DST-0159	477, 19W, 37W All Alum.; 477, 18/1, 24/7, 26/7	0.756" - 0.858"	67902223PREFORMED	50
DST-0160	556.5, 26/7, 636, 18/1	0.859" - 0.968"	67902224PREFORMED	50





## Spiral Vibration Damper

Damping devices are designed for the single purpose of reducing vibration. This function is entirely different from that of protecting against stress concentrations, fretting or abrasion and arc-over burning. Because of this, damping devices should be considered only as supplemental to WRAPLOCK® Tie, Armor Rod, Side Tie, Spool Tie or other hardware at tangent supports. Dampers are also used as supplemental protection at dead-ends. The degree of protection needed on a specific line depends upon a number of factors such as line design, temperature, tension, exposure to wind flow and vibration history on similar construction in the same area.



MFR MODEL #	LENGTH	DIAMETER RANGE	RESCO PART #	PACK. QTY.
5050103	49"	0.250" - 0.326"	80015015PREFORMED	50
5050104	51"	0.327" - 0.461"	80015020PREFORMED	50
5050105	53"	0.462" - 0.563"	80015030PREFORMED	50
5050106	65"	0.564" - 0.760"	80015031PREFORMED	25

## SUPER TOP-TIE®

Made of aluminum-clad steel compatible with aluminum, aluminum-alloy and ACSR conductors in the top grooves of vertical-mounted \*ANSI Class C, F, J, and many non-standard pin and post insulators (single- or double-support), or on \*ANSI 53-2 spool insulators (horizontal or vertical).



MFR MODEL #	CONDUCTOR SIZE	DIAMETER RANGE	RESCO PART #	PACK. QTY.
STT20	4 (6/1) ACSR; 4 (7W) AAC; 4 (7W) AAAC	0.221" - 0.257"	67904220CHANCE	50
STT60	1/0 (6/1) ACSR; 1/0 (7W) AAC; 1/0 (7W) AAAC	0.361" - 0.409"	67904260CHANCE	50
STT80	3/0 (6/1) ACSR; 3/0 (7W) AAC; 3/0 (7W)	0.461" - 0.516"	67904280CHANCE	50
STT90	4/0 (6/1) ACSR; 4/0 (7W) AAC; 4/0 (7W) AAAC	0.517" - 0.584"	67904290CHANCE	50
STT100	266.8 (18/1) ACSR; 266.8 (19W) AAC; 266.8 (19W) AAAC	0.585" - 0.664"	67904300CHANCE	50
STT110	336.4 (18/1) ACSR; 336.4 (19W) AAC; 336.4 (19W) AAAC	0.665" - 0.755"	67904301CHANCE	50
STT120	477 (18/1) ACSR; 477 (19W) AAC; 477 (19W) AAAC	0.756" - 0.859"	67904302CHANCE	50

# FORMED WIRE | CABLE

## Aluminum Tie Wire

Bare aluminum EC grade solid conductor. DSA "Utility Grade" Aluminum Tie Wire with greater elongation than standard soft drawn aluminum. "Utility Grade" aluminum offers greater flexibility making it easier for lineman to tie down insulators on a hot line. ASTM B-230 Aluminum 1350-H19 wire for electrical purposes.

MFR MODEL #	DIAMETER	WEIGHT PER 1,000 FT	BREAKING STRENGTH	RESCO PART #	PACK. QTY.
TIE4SOL AL SD	0.2043"	38.4 lbs	369 lbs	72300401	25 lb Coil
TIE6SOL AL SD	0.1620"	24.1 lbs	232 lbs	72300601	25 lb Coil

## Overhead Conductor

One concentric-lay-stranded all aluminum conductor covered with HMW polyethylene, or cross-linked polyethylene twisted together with one bare either AAC, ACSR, or AAAC concentric lay stranded neutral. Used in the overhead distribution of power from pole to building weath-erhead.

600V OVERHEAD DISTRIBUTION CONDUCTOR	PHASE CONDUCTOR	BARE NEUTRAL MESSENGER	RESCO PART #	PACK. QTY.
Shepherd Duplex	6 AWG 7 STR	6 AWG 6/1	16120601	500' Coil
Conch Triplex	2 AWG 7 STR	2 AWG 6/1	16130200	500' Coil
Conch Triplex	2 AWG 7 STR	2 AWG 6/1	16130201	1800' NRR
Periwinkle Triplex	4 AWG 7 STR	4 AWG 6/1	16130401	1500' NRR
Neretina Triplex	1/0 AWG 7 STR	1/0 AWG 6/1	16131010	500' Coil
Neretina Triplex	1/0 AWG 7 STR	1/0 AWG 6/1	16131011	1200' NRR
Janthina Triplex	1/0 AWG 7 STR	2 AWG 6/1	16131201	1200' NRR
Runcina Triplex	2/0 AWG 7 STR	2/0 AWG 6/1	16132001	1500' NRR
Zuzara Triplex	4/0 AWG 19 STR	4/0 AWG 6/1	16134001	1000' NRR

## Copper Ground Wire

Bare copper solid and stranded conductor bare, soft drawn (annealed). For use in electrical grounding systems and on insulators for overhead transmission and distribution applications. Stranded conductors offer greater flexibility than solid.

MFR MODEL #	SIZE	NORMAL DIAMETER	AMPACITY	RESCO PART #	PACK. QTY.
BSOS8-CU SDA	8 AWG SOL	0.1285	98	72500802	25 lb NRR
BST7S6-CU SDA	6 AWG 7 STR	0.1840	124	72500606	25 lb NRR
BSOS6-CU SDA	6 AWG SOL	0.1620	124	72500602	25 lb NRR
BST7S4-CU SDA	4 AWG 7 STR	0.2320	155	72500407	25 lb NRR
BSOS4-CU SDA	4 AWG SOL	0.2043	155	72500402	25 lb NRR
BST7S2-CU SDA	2 AWG 7 STR	0.2920"	209	72500205	25 lb NRR
BST7S1/0-CU SDA	1/0 AWG 7 STR	0.3680	282	72501111	50 lb Coil



## ACSR Cable

Aluminum conductor steel reinforced. Used as bare overhead transmission conductor and as primary and secondary distribution conductor and messenger support. ACSR offers optimal strength for line design. Variable steel core stranding enables desired strength to be achieved without sacrificing ampacity.

MFR MODEL #	SIZE (AWG OF KCMIL)	STRANDING (Al/Stl)	AMPACITY	RESCO PART #	REEL SIZE	FT/REEL
SWANATE	4	7/1	140	16110400	600 lbs	8955'
SPARROW	2	6/1	184	16110200	885 lbs	9695'
SPARATE	2	7/1	184	16110201	600 lbs	5625'
RAVEN	1/0	6/1	242	16111000	885 lbs	6090'
PIGEON	3/0	6/1	315	16113000	885 lbs	3835'
PENGUIN	4/0	6/1	357	16114000	885 lbs	3040'
MERLIN	336.4	18/1	519	16113050	2080 lbs	5695'
LINNET	336.4	26/7	529	16113300	3795 lbs	8205'



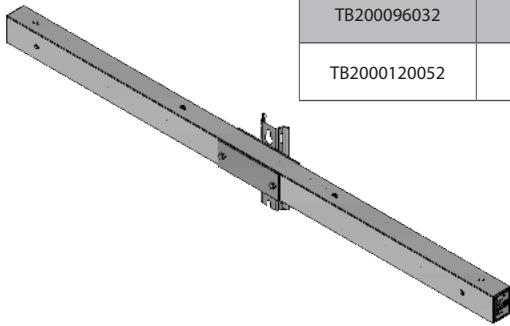
STORM RESPONSE

1-866-273-5030

# CROSSARMS | BRACES

## Tangent Fiberglass Crossarm

PUPI tangent crossarms with center mounts are engineered for easy installation and consistent performance. Mounts are welded structural steel, hot dip galvanized to ASTM A123 standard. Aluminum mounts are available for extremely corrosive environments.

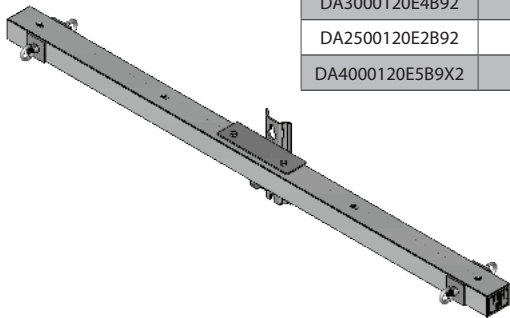


MFR MODEL #	DESCRIPTION	LENGTH	ULTIMATE VERTICAL LOAD PER SIDE	DEFLECTION PER 1,000 lbs PER SIDE	RESCO PART #	PACK. QTY.
TB200096032	3 3/8" x 4 5/8" Type 03 (TB200096032)	8'	6,400 lbs	0.72"	18212100PUPI	1
TB2000120052	3 3/8" x 4 5/8" Type 05 (TB200120052)	10'	5,400 lbs	1.21"	18212101PUPI	1

- Deflections are measured from center to phase attachment 4" from arm end
- Drilling pattern, 8' arms: RUS 03; 10' arms: RUS 05

## Dead-End Fiberglass Crossarm

Not only are PUPI dead-ends engineered to outperform and outlast wood or other composite beams, they're often less expensive than wood at installation. With proven performance in every climate, PUPI dead-end assemblies provide high strength and uniformity to give you the most reliable dead-end available today. No other dead-end assembly provides more weathering protection to provide superior longevity. Utilities large and small around the world choose PUPI dead-end assemblies for strength, durability and value.



MFR MODEL #	DESCRIPTION	WIRE POSITIONS PER ARM	ULTIMATE HORIZONTAL LOAD PER WIRE	DEFLECTION PER 1,000 lb PER WIRE	RESCO PART #	PACK. QTY.
DA250096E2B72	3 3/8" x 4 5/8" x 8'	2	10,000 lbs	0.45"	18212108PUPI	1
DA300096E2B72	3 3/8" x 4 5/8" x 8'	2	14,700	0.37	18212109PUPI	1
DA3000120E4B92	3 3/8" x 4 5/8" x 10'	4	10,000	0.92	18212110PUPI	1
DA2500120E2B92	3 3/8" x 4 5/8" x 10'	2	7,500	0.82	18212112PUPI	1
DA4000120E5B9X2	4" x 6" x 10'	5	13,000	0.41	18212118PUPI	1



## Apitong Wood Crossarm Brace

Dense-fiber Apitong wood from sustainably-managed forest. High strength, lightweight, pressure-treated preservative for protection against decay, fungi and insects. Aluminum end fittings, lightweight and corrosion resistant, tongue-and-groove connection, pinned to wood section, two mounting positions, side-arm mounting, flat brace 13/16" x 1 3/4" wood section, under-arm mounting, 1 1/4" sq. wood section, 1 3/4" sq. wood section, RUS listed.

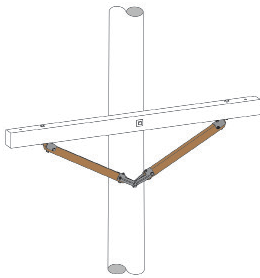


MFR MODEL #	DESCRIPTION	SPAN	DROP	LENGTH	POLE MOUNTING HOLE	CROSSARM MOUNTING HOLE	RESCO PART #	PACK. QTY.
PSCAF626*	Side-Arm Mount 13/16" x 1 3/4" flat Apitong Wood Section	38"	18"	26"	9/16"	7/16"	07535123HUBBELL	10
PSCRA6018*	Under-Arm Mount 1 3/4" square Apitong Wood Section	60"	18"	35"	11/16"	9/16"	07535166HUBBELL	5

\*Sold in pairs.

## Wood Crossarm Brace

446 Series Reversible Braces combine all the benefits required of a distribution brace and will satisfy most distribution applications. It is strong yet lightweight and can be furnished in a wide variety of spans and drops. Listed catalog numbers indicate pairs and standard hole sizes. The reversible feature allows for either left or right hand installations.



MFR MODEL #	DESCRIPTION	SPAN	DROP	LENGTH	POLE MOUNTING HOLE	CROSSARM MOUNTING HOLE	RESCO PART #	PACK. QTY.
446-60-18*	Underarm Mount 1 1/2" x 2 1/2" Wood Section	60"	18"	29.5"	11/16"	9/16"	07535166BROOKS	5

\*Sold in pairs.

## Wood Crossarm

REA Distribution Crossarms. Drilling guide M19. Crossarms are Douglas Fir treated with proper penetrations and retentions. Brooks is also an approved WQC facility.



MFR MODEL #	DESCRIPTION	POLE MOUNTING HOLE	CROSSARM MOUNTING HOLE	RESCO PART #	PACK. QTY.
6FT TYPE 2	3 5/8" x 4 5/8" x 5' - 7"	11/16"	11/16"	1821021BROOKS	50
8FT TYPE 3	3 3/4" x 4 3/4" x 8'	11/16"	11/16"	1821091BROOKS	50
10FT TYPE 5	3 3/4" x 4 3/4" x 10'	11/16"	11/16"	1821201BROOKS	50

# INSULATORS

## Porcelain Pin Type Insulator



MFR MODEL #	DESCRIPTION	TYPICAL APPLICATION VOLTAGE	ANSI	RESCO PART #	PACK. QTY.
6184R-70	C-Neck Insulator Pin, 15KV, 1" Thread	11.5kV	55-3	34223213LAPP	12
6183R-70	F-Neck Insulator Pin, 15KV, 1" Thread	13.2kV	55-4	34224213LAPP	12
8248R-70	J-Neck Insulator Pin, 15KV, 1 3/8" Thread	23kV	56-1	34231213LAPP	6

## Porcelain Post Type Insulator



MFR MODEL #	DESCRIPTION	TYPICAL APPLICATION VOLTAGE	RESCO PART #	PACK. QTY.
4315X70	C-Neck Insulator Post, 15KV, Gray	15kV	34257041LAPP	6
4315PX70	F-Neck Insulator Post, 15KV, Gray	15kV	34257043LAPP	6
4327X-70	C-Neck Insulator Post, 27KV, Gray	27kV	34257213LAPP	6
4327PX-70	F-Neck Insulator Post, 27KV, Gray	27kV	34257714LAPP	6

## Molded Insulator



MFR MODEL #	POLYMER INSULATOR DESCRIPTION	ANSI	RESCO PART #	PACK. QTY.
HPI-55-3	C-Neck Insulator Pin, 15 KV, Polymer	55-3	34257045HENDRIX	25
HPI-55-4	F-Neck Insulator Pin, Polymer, 15KV, 1" Thread	55-4	34224213HENDRIX	18
HPI-25J-02	J-Neck Insulator Pin, Polymer, 25KV, 1 3/8" Thread	56-1	34231213HENDRIX	12



## Spool Insulator

**GAMMA**  
Insulators



MFR MODEL #	PORCELAIN SPOOL DESCRIPTION	ANSI	RESCO PART #	PACK. QTY.
8441-70	Insulator Spool, ANSI 53-1, 2 $\frac{1}{2}$ " L	53-1	34262009LAPP	100
8442-70	Insulator Spool, ANSI 53-2, 3" L	53-2	34262010LAPP	45

**Hendrix**

MFR MODEL #	POLYMER SPOOL DESCRIPTION	ANSI	RESCO PART #	PACK. QTY.
HPI-53-2	Insulator Spool, ANSI 53-2, 3" L, Polymer	53-2	34262010HENDRIX	56



MFR MODEL #	BLACK POLYMER SPOOL DESCRIPTION	ANSI	RESCO PART #	PACK. QTY.
C909-1032P	Insulator Spool, ANSI 53-2, 3" L, Polymer	53-2	34262013HUBBELL	50

## Porcelain Guy Strain Insulator

**GAMMA**  
Insulators



MFR MODEL #	DESCRIPTION	CANTILEVER MECHANICAL STRENGTH RATINGS	ANSI	RESCO PART #	PACK. QTY.
8504-70	Insulator Guy Strain	12,000 lbs	54-2	34272010LAPP	50
8506-70	Insulator Guy Strain	20,000 lbs	54-3	34272015LAPP	18

**STORM RESPONSE**

**1-866-273-5030**

# INSULATORS | GUY STRAND

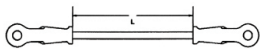
## Fiberglass Guy Strain Insulator

Guy Strains may be installed anywhere along the guy wire to help protect against stray current that may be on the guy caused by lightning strikes or other sources. These fiberglass units serve as a replacement for porcelain insulators or johnny balls, and they extend the insulation length. Fiberglass guy strains offer numerous advantages including variable lengths, easy terminations and resistance to fracture caused by brittleness.



MFR MODEL #	DESCRIPTION	ULTIMATE STRENGTH RATING	LENGTH	RESCO PART #	PACK. QTY.
GS16012CP	Guy Strain, 16K, 12"- Clevis Thimbleye®	16,000 lbs	12"	34272022HUBBELL	10
GS16018CP	Guy Strain, 16K, 18"- Clevis Thimbleye®	16,000 lbs	18"	34272018HUBBELL	10
GS21024CE	Guy Strain, 21K, 24"- Clevis Eye	21,000 lbs	24"	34272145HUBBELL	10
GS16036CP	Guy Strain, 16K, 36"- Clevis Thimbleye®	16,000 lbs	36"	34272017HUBBELL	10
GS16054CP	Guy Strain, 16K, 54"- Clevis Thimbleye®	16,000 lbs	54"	34271654HUBBELL	10
GS16054CT	Guy Strain, 16K, 54"- Clevis Thimble	16,000 lbs	54"	34271655HUBBELL	10
GS16078CP	Guy Strain, 16K, 78"	16,000 lbs	78"	34272178HUBBELL	10

## Fiberglass Guy Strain Insulator



MFR MODEL #	DESCRIPTION	ULTIMATE STRENGTH RATING	LENGTH	RESCO PART #	PACK. QTY.
GCTE15-18	Guy Strain, 15K, 18"- Clevis Thimbleye®	15,000 lb	18"	34272018MACLEAN	10
GCTE30-12	Guy Strain, 30K, 12"- Clevis Thimbleye®	30,000 lb	12"	34257090MACLEAN	5
GCTE15-12	Guy Strain, 15K, 12"- Clevis Thimbleye	15,000 lb	12"	34272022JOSLYN	10

## Dead-End Insulator

Porcelain Bell Equivalents – The full line of Veri\*Lite™ suspension and dead-end insulators are direct equivalents to 5¾" x 10" and 4¼" x 6¼" porcelain bells, respectively. DS Class Ratings – The polymer dead-end insulator product line has an offering for several DS class ratings, in accordance with ANSI C29.13 and CSA C411.5-10 standards.



MFR MODEL #	APPLICATION VOLTAGE	DRY ARC DISTANCE	LEAKAGE DISTANCE	60 HZ ELECTRICAL FLASHOVER DRY/WET	CIFO POS/NEG	LENGTH	RESCO PART #	PACK. QTY.
401015-0215	15 kV	8.1"	16"	110/75 kV	150/170	12.5"	34276031HUBBELL	15
401025-0215	25/35 kV	14.3"	31"	150/130 kV	270/280	18.75"	34276025HUBBELL	15
401028-0215	25 kV	12.6"	26"	130/110 kV	235/250	17.5"	34276030HUBBELL	15







## Dead-End Insulator

DS-M Series Distribution Dead-End Insulators

- Conventional design dead-end insulator
- Silicone shed housing is injection molded onto and bonded to the CR rod core
- Ductile iron end fitting are crimped to the fiberglass core in a tightly controlled process that ensures predictable tensile strength
- Unique multi-level sealing process



MFR MODEL #	LINE VOLTAGE	DRY ARC DISTANCE	LEAKAGE DISTANCE	60 HZ ELECTRICAL FLASHOVER DRY/WET	CIFO POS/NEG	LENGTH	RESCO PART #	PACK. QTY.
DS-15-M	15 kV	7.6"	15.8"	90/65 kV	140/145	13"	34276031JOSLYN	18

## Guy Strand

Galvanized steel strand for guy wires, overhead ground wires and messenger cables.



MFR MODEL #	DESCRIPTION	MINIMUM BREAKING STRENGTH	RESCO PART #	PACK. QTY.
7/16SM-A-250	Guy Strand, 7/16", SM, Class "A"	9,350 lbs	73816717NATIONALSTRAND	250
3/8SM-A-250	Guy Strand, 3/8", SM, Class "A"	6,950 lbs	73818317NATIONALSTRAND	250
3/8HS-A-250	Guy Strand, 3/8", High Strength, Class "A"	10,800 lbs	73868305NATIONALSTRAND	250
38AEHS7	Guy Strand, 3/8", Class "A" EHS	15,400 lbs	73868330NATIONALSTRAND	250

## Aluminum Clad Steel Strand



Alumoweld strand provides non-rusting, high-strength guys for electrical distribution and transmission lines, communications and signal lines, antenna towers, masts, stacks and other structures. The high tensile strength of this light-weight strand is permanently protected against corrosion by a thick cladding of aluminum. Costly maintenance resulting from corrosion is eliminated, and the original safety factor of the guy is maintained throughout the life of the line.



MFR MODEL #	DESCRIPTION	BREAKING STRENGTH	RESCO PART #	PACK. QTY.
10M-500	Guy Strand, Alumoweld, 10M	10,000 lbs	73840710CONEX	500
8M-500	Guy Strand, Alumoweld, 8M	8,000 lbs	73840711CONEX	500

STORM RESPONSE

1-866-273-5030

# TRANSFORMERS

## ERMCO Single-Phase Pole-Mounted Distribution Transformer

ERMCO single-phase pole-mounted distribution transformers are designed and manufactured in compliance with all applicable ANSI and RUS standards. All transformers are oil filled, 65°C rise and designed for usual service conditions per ANSI C57.12.00.

### Quality and Reliability

- ERMCO is an ISO9001 certified company
- All electrical testing is per IEEE standards
- Other tests for control purposes include: core loop loss and exciting current, coil ratio and polarity, oil properties, and three separate leak tests

### Warranty

- 3 year warranty on CSP
- 2 year warranty on Conventional
- Coverage includes round trip transportation between the purchasers shipping dock and the repair facility



## Pole-Mount Transformer

Single-Phase Conventional Single-Bushing Pole-Mount Transformer

- HV: 12470GRDY/7200 95 BIL 1BU
- LV: Interlaced 120/240 3 LV BU
- 2 Sets of Hanger Brackets
- No Taps
- Meets or exceeds DOE Efficiency Standard



MFR MODEL #	DESCRIPTION	RESCO PART #
103-Y0111-1490	1.5KVA CONV 7200 SB 120/240 NT	83211106ERMCO
10KVA 1P POLE	10KVA CONV 7200 SB 120/240NT	84211112ERMCO
15KVA 1P POLE	15KVA CONV 7200 SB 120/240NT	84211114ERMCO
25KVA 1P POLE	25KVA CONV 7200 SB 120/240NT	84211116ERMCO
37.5KVA 1P POLE	37KVA CONV 7200 SB 120/240NT	84211118ERMCO
50KVA 1P POLE	50KVA CONV 7200 SB 120/240NT	84211120ERMCO

## Pole-Mount Transformer

Single-Phase Conventional Double-Bushing Pole-Mount Transformer

- HV: 7200/12470Y 95 BIL 2BU
- LV: Interlaced 120/240 3 LV BU
- 1 Set of Hanger Brackets
- No Taps
- Meets or exceeds DOE Efficiency Standard



MFR MODEL #	DESCRIPTION	RESCO PART #
10KVA 1P POLE DB	10KVA CONV 7200 DB 120/240NT	84211211ERMCO
15KVA 1P POLE DB	15KVA CONV 7200 DB 120/240NT	84211214ERMCO
25KVA 1P POLE DB	25KVA CONV 7200 DB 120/240NT	84211216ERMCO
37.5KVA 1P POLE DB	37KVA CONV 7200 DB 120/240NT	84211218ERMCO
50KVA 1P POLE DB	50KVA CONV 7200 DB 120/240NT	84211220ERMCO
75KVA 1P POLE DB	75KVA CONV 7200 DB 120/240NT	84211221ERMCO
100KVA 1P POLE DB	100KVA CONV 7200 DB 120/240NT	84211222ERMCO



## Pole-Mount Transformer

Single-Phase Conventional Double-Bushing Pole-Mount Transformer

- HV: 7200/12470Y 95 BIL 2BU
- LV: 277/480Y 2 LV BU
- 1 Set of Hanger Brackets
- No Taps
- Meets or exceeds DOE Efficiency Standard



MFR MODEL #	DESCRIPTION	RESCO PART #
15KVA 1P POLE DB 277	15KVA CONV 7200 DB 277NT	84317213ERMCO
25KVA 1P POLE DB 277	25KVA CONV 7200 DB 277NT	84317215ERMCO
37.5KVA 1P POLE DB 277	37KVA CONV 7200 DB 277NT	84317217ERMCO
50KVA 1P POLE DB 277	50KVA CONV 7200 DB 277NT	84317219ERMCO

## Pole-Mount Transformer

Single-Phase CSP Pole-Mount Transformer

- Completely Self Protected
- HV: 12470GRDY/7200 95 BIL 1BU
- LV: Interlaced 120/240 3 LV BU
- CSP - Load Side Circuit Breaker
- Internal BU MTD Fuse (1) Per HVBU
- STD Polymer Arrester
- 2 Sets of Hanger Brackets
- No Taps
- Meets or exceeds DOE Efficiency Standard



MFR MODEL #	DESCRIPTION	RESCO PART #
10KVA 1P POLE CSP	10KVA CSP 7200 SB 120/240NT	84211312ERMCO
15KVA 1P POLE CSP	15KVA CSP 7200 SB 120/240NT	84211314ERMCO
25KVA 1P POLE CSP	25KVA CSP 7200 SB 120/240NT	84211316ERMCO
37.5KVA 1P POLE CSP	37KVA CSP 7200 SB 120/240NT	84211317ERMCO
50KVA 1P POLE CSP	50KVA CSP 7200 SB 120/240NT	84211322ERMCO



STORM RESPONSE

1-866-273-5030

# ANCHORING

## Anchor Rod Bonding Clamp

Bonding Clamps make a dependable mechanical and electrical pressure contact between guy strand and anchor rod, when the guy is part of the grounding system. Used on Thimbleye® and Angle-Thimbleye® bolts to keep hardware-to-guy contacts tight.



**CHANCE**



### For Anchor Rod Eyes (Expanding, Crossplate & Rock Anchor Rods)

MFR MODEL #	EYE TYPE	ROD SIZE	RESCO PART #	PACK. QTY.
G5060	Thimbleye®	1/2" & 5/8"	11711111CHANCE	250



### For PISA Eyenuts (Power Installed Screw Anchor Rods)

MFR MODEL #	DIAMETER	LENGTH	RESCO PART #	PACK. QTY.
G5067	Thimbleye®	1/2" & 5/8"	11712110CHANCE	100
G5068	Thimbleye®	3/4" & 1"	11712210CHANCE	100
G5069	Twineye®	5/8', 3/4" & 1"	11712130CHANCE	100
C2030148	Tripleye®	5/8', 3/4" & 1"	11712430CHANCE	100

## Bust Expanding Anchors

Chance "Bust" Expanding Anchors expand to take full advantage of the available area. All eight blades wedge into undisturbed earth. This anchor should be installed in relatively dry and solid soils. The effectiveness of the anchor is dependent upon the thoroughness of backfill tamping.



**CHANCE**



MFR MODEL #	ANCHOR HOLE	ROD SIZE	AREA	RESCO PART #	PACK. QTY.
88135	8"	5/8" or 3/4"	135 sq. in.	00934810CHANCE	6

## Pole Key

Made of structural steel, the Pole Key anchor is used where guys are impractical or as backup.



**CHANCE**



MFR MODEL #	WIDTH EXPANDED	BLADE WIDTH	AREA EXPANDED	RESCO PART #	PACK. QTY.
P4817	27 1/4"	7"	276 sq. in.	00944050CHANCE	1

## Anchor Rods, Galvanized

Available for one, two or three guys for use with expanding and cross-plate anchors. Thimbleye®, Twineye® and Tripleye® rods distribute pulling stresses uniformly over individual strands of guy wire and keep the guy wire from spreading, kinking or bending. Each rod is threaded 3 1/2" minimum length. Nuts included.



**CHANCE**



MFR MODEL #	ADAPTER	SIZE	RESCO PART #	PACK. QTY.
5315	Thimbleye®	5/8" x 5'	53618505CHANCE	5/10
5317	Thimbleye®	5/8" x 7'	53618507CHANCE	5/10
7568	Tripleye®	1" x 8'	53634510CHANCE	2
7558	Tripleye®	3/4" x 8'	53634515CHANCE	5



## Hubbell Chance® Multi-Helix Anchors

Square-Shaft "SS" multi-helix screw anchors are designed for heavy guy loading. They have 1½" square steel shafts. Extension shafts must be coupled to the helix section for installation to the proper depth.

SS screw anchors consist of three galvanized components: the lead section, the extension shaft, which includes an integral coupling, and the guy adapter. Extensions and guy adapters include a high-strength bolt and nut.

### Multi-Helix Screw Anchor Lead Sections



MFR MODEL #	LENGTH	HELIX COMBINATIONS	RESCO PART #	PACK. QTY.
012642-AE	3'	8" - 10"	00994028CHANCE	1
012642-AEJ	5 ½'	8" - 10" - 12"	00994030CHANCE	1
012642-EJ	3 ½'	10" - 12"	00994021CHANCE	1

### Multi-Helix Screw Anchor Extension



MFR MODEL #	LENGTH	RESCO PART #	PACK. QTY.
12655	3 ½'	53638509CHANCE	1/50
12656	5'	53638510CHANCE	1/50
12657	7'	53638511CHANCE	1/40

### Multi-Helix Screw Anchor Guy Adapters



MFR MODEL #	ADAPTER	LENGTH	RESCO PART #	PACK. QTY.
C1020023	Thimbleye® Adapter	17"	42900879CHANCE	5
C1020024	Twineye® Adapter	17"	42900880CHANCE	5
C1020025	Tripleye® Adapter	17"	42900881CHANCE	5

# ANCHORING

## Tough One® Anchor Helix

Tough One® anchors give users high-strength anchor capability in all soils. You get a better anchor at an economical price. With Tough One® anchors, there's little concern about anchor breakage when encountering hard soils.



MFR MODEL #	DIAMETER	TORQUE RATING	HUB SIZE	HELIX	RESCO PART #	PACK. QTY.
C102-5208	8"	8,000 lbs	2.25" Square Inside Hub	For 5/8" Dia. Rods	00995050CHANCE	4
C102-5204	8"	8,000 lbs	2.25" Square Inside Hub	For 3/4" & 1" Dia. Rods	00995051CHANCE	4
C102-5000	8"	15,000 lbs	2.5" Square Inside Hub	For 3/4" & 1" Dia. Rods	00995020CHANCE	4
C102-5209	10"	8,000 lbs	2.25" Square Inside Hub	For 5/8" Dia. Rods	00995054CHANCE	4
C102-5205	10"	8,000 lbs	2.25" Square Inside Hub	For 3/4" & 1" Dia. Rods	00995052CHANCE	4
C102-5201	10"	10,000 lbs	2.25" Square Inside Hub	For 3/4" & 1" Dia. Rods	00995025CHANCE	4
C102-5206	12"	8,000 lbs	2.25" Square Inside Hub	For 3/4" & 1" Dia. Rods	00995056CHANCE	2
C102-5207	14"	8,000 lbs	2.25" Square Inside Hub	For 3/4" & 1" Dia. Rods	00995060CHANCE	2

## PISA® Anchor Helix

Chance® mid-strength 6,000 foot-pound anchors have curvilinear leading edges to help penetrate rocky soils and to reduce damage during installation. These anchors are available in single and twin-helix designs.



MFR MODEL #	DIAMETER	HELIX	RESCO PART #	PACK. QTY.
E102-1629	8"	Single; For 5/8" Dia. Rods	00995008CHANCE	4
E102-1630	10"	Single; For 5/8" Dia. Rods	00995010CHANCE	4
E102-1633	10"	Single; For 3/4" & 1" Dia. Rods	00995013CHANCE	4
E102-1634	12"	Single; For 3/4" & 1" Dia. Rods	00995015CHANCE	4
E102-1801	14"	Single; For 3/4" & 1" Dia. Rods	00995016CHANCE	2
E102-1637	10"	Twin; For 3/4" & 1" Dia. Rods	00995018CHANCE	1

## PISA® Anchor Rod

Hot-dip galvanized per ASTM A153.



MFR MODEL #	DIAMETER	LENGTH	ULTIMATE STRENGTH RATING	RESCO PART #	PACK. QTY.
12332P	5/8"	7"	16,000 lbs	53638507CHANCE	5
12632P	3/4"	7"	23,000 lbs	53634307CHANCE	5



## PISA® Anchor Rod & Eyenut Combination

Hot-dip galvanized per ASTM A153.



**CHANCE**



MFR MODEL #	DESCRIPTION	RESCO PART #	PACK. QTY.
E1020035	5/8" x 7' Rod & Thimbleye® Nut	53638520CHANCE	5
E1020036	3/4" x 7' Rod & Thimbleye® Nut	53638521CHANCE	5
E1020044	3/4" x 7' Rod & Twineye® Nut	53638523CHANCE	5
E1020045	1" x 7' Rod & Twineye® Nut	53638525CHANCE	1

## PISA® Anchor Eyenut

Hot-dip galvanized per ASTM A153.



**CHANCE**



MFR MODEL #	DIAMETER	RESCO PART #	PACK. QTY.
12585	Tripleye® for 3/4" & 1" Dia. Rods	42901258HUBBELL	25
12587	Thimbleye® for 5/8" Dia. Rods	42900863CHANCE	25
6562	Twineye® for 3/4" & 1" Dia. Rods	42900872CHANCE	25
6512	Thimbleye® for 3/4" & 1" Dia. Rods	42900874CHANCE	25

## Extension Rod & Coupling Combinations.



**CHANCE**



MFR MODEL #	DIAMETER	LENGTH	RESCO PART #	PACK. QTY.
12250A	3/4"	3 1/2'	53608537CHANCE	5

**STORM RESPONSE**

**1-866-273-5030**

## Klein Grips

Trust the quality and reliability of Klein grips. All authentic Klein Grips are manufactured, inspected and tested in the USA, in company owned plants by American workers. Klein Chicago® and Haven's® Grips are widely used in the power, communications and general construction fields to pull wire and cable. The grips maintain temporary tension until the wire or cable can be permanently terminated.



MFR MODEL #	GRIP TYPE	CABLE RANGE	MIN TO MAX CABLE AWG	RESCO PART #	PACK. QTY.
1604-20	Haven's® Grip for Messenger and Guy Strand. Maximum safe working load of 5,000 lbs.	0.125" - 0.50"	-	78160420KLEIN	1
1613-40	Chicago® Grip for Extra-High-Strength Cables, Messenger, Guy Strand	0.12" - 0.37"	-	78161340KLEIN	1
1656-20	Chicago® Grip for Bare ACSR, Aluminum, and Stranded-Copper Cables. Maximum safe working load of 4,500 lbs.	0.250" - 0.398"	4 - 1/0	78165620KLEIN	1
1656-30	Chicago® Grip for Bare ACSR, Aluminum, and Stranded-Copper Cables. Maximum safe working load of 4,500 lbs.	0.325" - 0.502"	2 - 3/0	78165628KLEIN	1
1656-40	Chicago® Grip for Bare ACSR, Aluminum, and Stranded-Copper Cables. Maximum safe working load of 8,000 lbs.	0.563" - 0.720"	4/0 - 336.4 MCM	78165640KLEIN	1

## Ratchet Chain Hoist

A link-chain style for reliable performance.

- Lightweight, high-strength handle and sheave housings are heat-treated aluminum
- All working parts are fully enclosed in the housing unit for operator safety
- High-strength alloy steel chain is polished for smooth action and low wear
- Load hooks are forged steel with automatic spring-loaded latches
- Two-way handle allows for easy access and operation overhead or below chest level
- Rounded stop on handle end helps to ensure firm operator grip
- 5½ ft. Standard Lift Distance
- 20" handle/aluminum housing



MFR MODEL #	RATING	HANDLE PULL AT RATING	HOOK-TO-HOOK MINIMUM	RESCO PART #	PACK. QTY.
3011S	1-Ton	90 lb.	11"	78603011CHANCE	1





## Pliers



MFR MODEL #	TOOL TYPE	RESCO PART #	PACK. QTY.
D2000-9NE	9" (229 mm) Insulated High-Leverage Side-Cutting Pliers 2000 Series®	78002015KLEIN	1
D213-9NE	9" (229 mm) High-Leverage Side-Cutting Pliers	78002149KLEIN	1
D502-10	10" (254 mm) Pump Pliers	78056020KLEIN	1

## Socket

3-in-1 impact socket features three square socket sizes: 3/4", 1" and 1 1/8".



MFR MODEL #	TOOL TYPE	RESCO PART #	PACK. QTY.
NRHD	3-in-1 Impact Socket	78003311KLEIN	1

## Screwdriver

Keystone-tip screwdriver with heavy-duty square shank for wrench-assisted turning.



MFR MODEL #	TOOL TYPE	RESCO PART #	PACK. QTY.
600-6	5/16" (8 mm) Keystone-Tip Screwdriver 6" (152 mm) Heavy-Duty Square-Shank	78006006KLEIN	1
600-8	3/8" (10 mm) Keystone-Tip Screwdriver 8" (203 mm) Heavy-Duty Square-Shank	78006008KLEIN	1

## Ruler

Wood folding ruler with clear abrasion-resistant coating.



MFR MODEL #	TOOL TYPE	RESCO PART #	PACK. QTY.
900-6	Wood Folding Rules - Inside Reading. Strong, 6' (1.83 m) long hardwood rules with clear abrasion-resistant coating. Riveted lock joints are designed for long wear and maintained accuracy. Black markings on yellow, with red stud center markings every 16 inches. Measurements are marked on both sides and both edges, graduated to 1/16th inch. Engraved graduations on both sides.	78009006KLEIN	1

# TOOLS

## Adjustable Wrench

Extra capacity allows use of smaller size wrench to handle bigger jobs in confined spaces.



MFR MODEL #	TOOL TYPE	LENGTH	RESCO PART #	PACK. QTY.
D507-10	1 5/16" Adjustable Wrench Extra Capacity	10 3/8"	78056010KLEIN	1
D507-12	1 1/2" Adjustable Wrench Extra Capacity	12 3/8"	78056012KLEIN	1

## Knife

Ideal for heavy-duty line work.



MFR MODEL #	TOOL TYPE	RESCO PART #	PACK. QTY.
1550-4	Pocket Knife Carbon Steel 2 3/8" (67 mm) Sheepfoot Slitting Blade	78015504KLEIN	1
1570-3	Cable/Lineman's Skinning Knife Hook Blade, Notch & Ring	78015525KLEIN	1

## Cable Cutter

Small ACSR cable cutter.



MFR MODEL #	TOOL TYPE	LENGTH	RESCO PART #	PACK. QTY.
63607	Small ACSR Cable Cutter. Maximum Cable Cutting Capacity: 336 ACSR, 600 MCM stranded aluminum & copper, 400 MCM solid copper	10 1/4"	78363070KLEIN	1

## Hand Tool

For power line sleeves.



MFR MODEL #	TOOL TYPE	RESCO PART #	PACK. QTY.
53-XPJ-FIBERGLASS	Hand Tool, Fiberglass Handle X/P/J Groove	78625401NATIONALTELE	1



## Flash Light



MFR MODEL #	LIGHT TYPE	SIZE (L x W x H)	RESCO PART #	PACK. QTY.
44450	Fire Vulcan® LED Rechargeable Lantern, 120V with quick release shoulder strap, AC/DC, Orange	7.50" (19.05 cm) x 5" (12.7 cm) x 6.50" (16.51 cm)	77700020STREAMLIGHT	1
45116	LiteBox® Rechargeable Lantern - 120V, 8 Watt Spot - Orange	11.5" (29.2 cm) x 5.1" (13 cm) x 7" (17.8 cm)	77700024STREAMLIGHT	1
90627	Knucklehead® Rechargeable LED Worklight, 120V AC & DC - Yellow, Shockproof dual C4® premium LED technology delivers 200 lumens	H: 9.20" (23.4 cm) W: 2.85" (7.2 cm)	77700027STREAMLIGHT	1
71500	Streamlight Jr.® LED, 1 watt C4® LED, 50,000 hour	L: 6.5" (16.51 cm)	77700030STREAMLIGHT	1
45806	E-Flood® LiteBox® LED Rechargeable Lantern, Standard System, with 120V AC/DC Charge Cords, Shoulder Strap, and Mounting Rack - Orange	11.5" (29.2 cm) x 5.1" (13 cm) x 7" (17.8 cm)	77700035STREAMLIGHT	1
45851	E-Spot® LiteBox® LED Rechargeable Lantern with Power Failure System	11.5" (29.2 cm) x 5.1" (13 cm) x 7" (17.8 cm)	77700051STREAMLIGHT	1
45601	HID LiteBox® Rechargeable Lantern, Standard System with 120V AC and 12V DC Charge Cords and Rack, Shoulder Strap, Flood Lens, and Vehicle Mount System - Orange	H: 8.8" (23 cm)	77700060STREAMLIGHT	1
44900	Waypoint® Non-Rechargeable Pistol Grip Spotlight with C4 LED Technology, 50,000 Hour Lifetime, Trigger Style Switch, 12V DC Power Cord, Integrated Stand - Yellow	H: 6.75" (17.15 cm) x H: 7.14" (18.14 cm)	77700090STREAMLIGHT	1

## Hard Hat Light

Rite-Lite® hard hat light attaches with mounting strips or can be used as a hand-held flashlight.



MFR MODEL #	TOOL TYPE	SIZE	RESCO PART #	PACK. QTY.
78790 RL11	Disposable Alkaline Hard Hat Light with Velcro	2" x 2 3/4"	78650300HDELECTRIC	1

CORPORATE – WISCONSIN

**Office/Warehouse**

2250 Pinehurst Drive  
Middleton, WI 53562  
Sales Support: (800) 356-9370

MINNESOTA

**Office/Warehouse**

4100 30<sup>th</sup> Avenue South  
Moorhead, MN 56560  
Sales Support: (800) 346-3330

IOWA

**Office/Warehouse**

933 SE Shurfine Drive  
Ankeny, IA 50021  
Sales Support: (888) 293-7372

MICHIGAN

**Warehouse**

1640 Gover Parkway  
Mt. Pleasant, MI 48858  
Sales Support: (800) 356-9370

NORTH DAKOTA

**Warehouse**

508 58<sup>th</sup> Street West  
Williston, ND 58801  
Sales Support: (800) 346-3330

SOUTH DAKOTA

**Warehouse**

3715 Airport Road  
Pierre, SD 57501  
Sales Support: (800) 346-3330

NEBRASKA

**Warehouse**

404 West 8<sup>th</sup> Street  
Suite 2  
Kearney, NE 68845  
Sales Support: (888) 293-7372

[info@resco1.com](mailto:info@resco1.com)

[www.resco1.com](http://www.resco1.com)

STORM RESPONSE

(866) 273-5030

**RESCO**